

PARTS LIST		VANCS WASTEWATER PUMP			6/7/2018	
ITEM	PART No.	DESCRIPTION	QTY	SIZE	MATERIAL	NOTES
1	106-000-02	Float Set	1Set	AO2-3(600L/400L/600L)		
2	143-000-45	Tapping Screw	2	M5x25	SUS304	
3	001-001-88	Cabtyre Cable Set (32') 60Hz (USA)	1	VCT4Cx3.5mm2	BE(40)	
4	143-000-45	Tapping Screw	3	M5x25	SUS304	
5	003-000-13	Gland	1	BECE(P.C.40)	SUS304	
6	109-129-19	Float Support Bush	1	d14	Rubber	
7	109-132-15	Float Support Pipe	1	d14x300l	PVC	
8	143-143-15	Truss Tapping Screw	1	M4x16(D=8)	SUS304	
9	109-130-13	Float Support Bush	1	d14	Rubber	
10	143-143-15	Truss Tapping Screw	1	M4x16(D=8)	SUS304	
11	109-000-20	Holder	1		Resin	
12	143-143-15	Truss Tapping Screw	1	M4x16(D=8)	SUS304	
13	143-174-15	Tapping Screw	2	M4x14	SUS304	
14	051-000-42	Motor Head Cover	1		Resin	
15	141-029-18	Hex.Cap Nut	4	M6	SUS304	
16	142-126-19	Plain Washer	4	M6	SUS304	
17	009-001-12	Intermediate Lead Wire	1Set	AWG12x210L,Red		
18	009-001-13	Intermediate Lead Wire	1Set	AWG12x210L,Black		
19	143-000-56	Pan Tapping Screw	2	M4x18	SWCH	
20	114-168-16	Electromagnetic Contactor	1Set	SD-M19/SD-Q19		
21	143-152-17	Truss Tapping Screw	2	M3x8	SWCH	
22	115-141-16	Transformer 208/220V-60Hz(USA)	1	WK200/20		
	115-144-19	Transformer 460V-60Hz(USA)	1	WK460/20		
	115-145-10	Transformer 575V-60Hz(USA)	1	WK525/20		
23	143-000-52	Pan Tapping Screw	3	M3x25	SWCH	
24	114-179-10	Relay Unit	1Set	MWOK1-KA1		
25	143-138-17	Truss Tapping Screw	2	M4x12	SWCH	
26	053-001-72	Motor Protector 208/220V-60Hz(USA)	1	KA313-GGXL110	(T)	
	053-271-11	Motor Protector 460/575V 60Hz (USA)	1	KA313-GCXL103	(T)	
27	121-001-22	Packing	1	d169xd176x3.1t(P.C.160)	NBR	*
28	143-000-48	Pan Screw	4	M6x250L(20L)	SWRM	
29	142-113-26	Plain Washer	4	M6(D=11.5)	SPC	
30	082-000-02	Head Cover Spacer	1		Resin	
31	121-001-23	Packing	1	VK(T)-22/37(A)T(W)	NBR	*
32	143-085-34	Pan Screw (w/Spring Washer)	1	M4x6	C3604	
33	009-001-09	Earth Terminal	1Set	2mm2x260L		
34	050-000-63	Motor Bracket	1		ADC	
35	056-005-99	Stator(w/M.Frame) 208/220V-60Hz(USA)	1Set			

PARTS LIST		VANCS WASTEWATER PUMP				6/7/2018
ITEM	PART No.	DESCRIPTION	QTY	SIZE	MATERIAL	NOTES
	056-006-02	Stator(w/M.Frame) 460V-60Hz(USA)	1Set			
	056-006-03	Stator(w/M.Frame) 575V-60Hz(USA)	1Set			
36	142-000-75	Wave Washer	1	BBA0630300A0,T=0.3	SUP	
37	052-187-16	Bearing (w/O-ring)	1	AC-6204ZZC3		
38	055-001-80	Rotor	1Set	w/Bearing		
39	147-000-41	Impeller Key	1	5x5x18.5L	SUS304	
40	140-000-06	Hex.Bolt (w/Spring Washer/Plain Washer)	2	M6x12	SWCH	
41	052-109-14	Bearing	1	6306ZZC3		
42	060-001-16	Bearing Housing	1		ADC	
43	025-001-00	Mechanical Seal	1	H-25T (RoHS)	SiC	supercedes 025-255-12 and 025-000-07
44	143-070-23	Pan Screw	2	M5x6	SWRM	
45	030-143-12	Oil Lifter	1	H-25(A)(T)	Resin	
46	143-193-10	Pan Tapping Screw	2	M5x12	SWRM	
47	030-152-14	Seal Stopper	1	H-25(A)(T)	SPCC	
48	121-001-62	Packing	1	d160.4xd169.4x6.5t(P.C.14 4)70	NBR	* interchangeable with OLD part# 121-001-20
49	035-127-15	Oil Plug	1	M10x15	SUS304	
50	121-246-11	Packing	1	d10.3xd16x2t	PE	*
51	029-000-88	Oil Casing	1	80PUT22.2/23.7-51/61	Resin	
52	109-129-19	Float Support Bush	1	d14	Rubber	
53	140-000-09	Hex.Bolt (w/Spring Washer)	4	M8x45	SUS304	
54	143-143-15	Truss Tapping Screw	1	M4x16(D=8)	SUS304	
55	143-000-46	Truss Screw (w/O-Ring)	6	M6x40(P-5,NBR)	SUS304	*
56	021-008-61	Impeller (60Hz)	1	80PSFW23.7-61	Resin	
57	142-000-71	Impeller Washer	1	d11xd31x4t	SUS304	
58	142-164-19	Spring Washer	1	M10	SUS304	
59	140-000-65	Hex. Socket Button Head Screw	1	M10x25	SUS304	
60	122-283-13	O-Ring	1	165xd3.1	NBR	*
61	140-000-09	Hex.Bolt (w/Spring Washer)	4	M8x45	SUS304	
62	048-000-75	Screwed Flange	1	NPT-3(1.5kW)	Resin	
63	121-568-12	Packing	1	d84xd98x5t	NBR	*
64	020-002-33	Pump Casing	1	80PN/65PSF22.2/3.7-51/61	Resin	
65	141-121-11	Hex.Nut	2	M8(B=12)	SUS304	
66	165-000-07	Rubber Feet	5	PU/PN/PSF21.5-52/62	NBR	
67	023-001-07	Strainer	1	65PSF22.2/3.7-51/61	Resin	
68	143-000-10	Truss Tapping Screw	4	M4x18	SUS304	
	173-002-35	Packing O-Ring Set	1Set	(Marked by *)		
27	121-001-22	Packing (Head Cover/Head Cover Spacer)	1	d169xd176x3.1t(P.C.160)	NBR	*
31	121-001-23	Packing (Head Cover Spacer/M.Frame)	1	VK(T)-22/37(A)T(W)	NBR	*



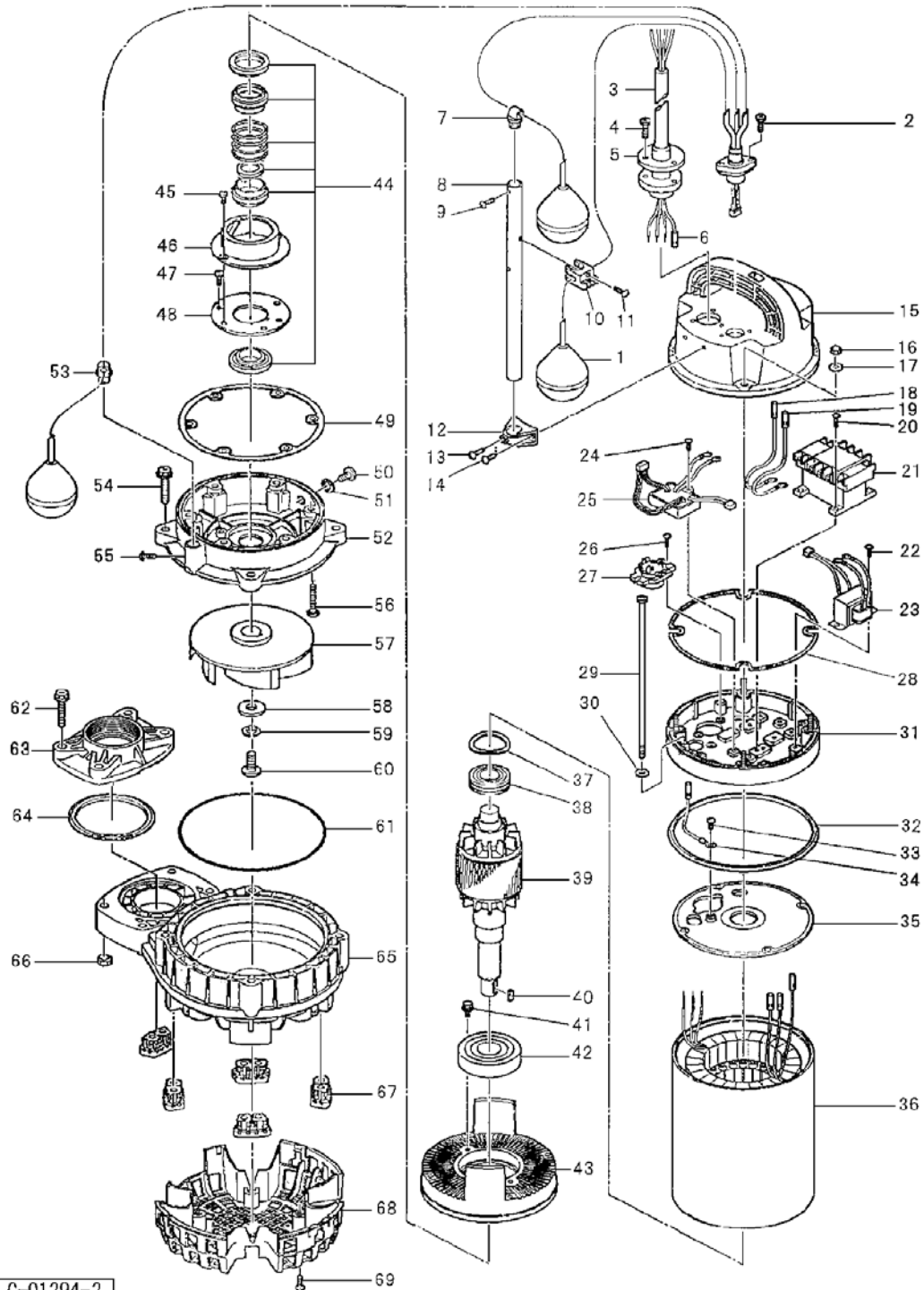
MODEL 80PSFW23.7-61

PARTS LIST		VANCS WASTEWATER PUMP				6/7/2018
ITEM	PART No.	DESCRIPTION	QTY	SIZE	MATERIAL	NOTES
48	121-001-62	Packing (M.Frame/O.Casing)	1	d160.4xd169.4x6.5t(P.C.14 4)70	NBR	* interchangeable with OLD part# 121-001-20
50	121-246-11	Packing (Oil Plug)	1	d10.3xd16x2t	PE	*
55	122-003-17	O-Ring (O.Casing Bolt)	6	P-5(4.8xd1.9)	NBR	*
60	122-283-13	O-Ring (O.Casing/P.Casing)	1	165xd3.1	NBR	*
63	121-568-12	Packing (Screwed Flange)	1	d84xd98x5t	NBR	*
		Lubricant		Liquid Paraffin VG32 680ml		

PARTS LIST		VANCS WASTEWATER PUMP				6/7/2018
ITEM	PART No.	DESCRIPTION	QTY	SIZE	MATERIAL	NOTES

EXPLODED VIEW

80PSFW23.7-61



C-01294-2