

PARTS LIST		CORROSION RESISTANT PUMP				1/26/2017
ITEM	PART No.	DESCRIPTION	QTY	SIZE	MATERIAL	NOTES
1	140-021-20	Hex.Bolt	3	M5x20	SUS316	
2	003-157-15	Gland	1	37-CL2	SUS316	
3	001-005-85	Cabtyre Cable Set (32') 60Hz(USA)	1	2PNCT2Cx1.25mm2	CL2	replaces OLD part# 001-000-40 (2mm2)
4	009-274-17	Compression type Terminal	2	TMNB-2(Insulated)		
5	001-004-70	Cabtyre Cable Set (32') 60Hz(USA)	1	2PNCT3Cx3.5mm2	SFQ	
6	004-130-15	Cable Bush	1	d15.5xd49x20l	CR	
7	001-004-64	Cabtyre Cable Set (32') 60Hz(USA)	1	2PNCT4Cx3.5mm2	SFQ	
8	140-079-36	Hex.Bolt	4	M10x40	SUS316	included in ITEM#5 Cable Ass'y included in ITEM#7 Cable Ass'y
9	141-006-22	Hex.Nut	4	M10	SUS316	included in ITEM#5 Cable Ass'y included in ITEM#7 Cable Ass'y
10	003-112-18	Gland	2	No.2	SCS14	included in ITEM#5 Cable Ass'y included in ITEM#7 Cable Ass'y
11	004-131-16	Cable Bush	1	d17xd49x20l	CR	included in ITEM#5 Cable Ass'y included in ITEM#7 Cable Ass'y
12	005-120-15	Bush Washer	2	d19.5xd49x3.2t	SPC	included in ITEM#5 Cable Ass'y included in ITEM#7 Cable Ass'y
13	140-056-24	Hex.Bolt	8	M8x30	SUS316	
14	142-163-21	Spring Washer	8	M8	SUS316	
15	006-101-26	Stuffing Box	2	55/75-CL	SCS14	included in ITEM#5 Cable Ass'y included in ITEM#7 Cable Ass'y
16	122-126-20	O-Ring	2	G-75(74.4xd3.1)	VITON	*
17	143-014-16	Pan Screw	1	M4x8	SWRM	
18	142-160-31	Spring Washer	1	M4	SWRH	
19	009-130-10	Terminal	1	R-5.5-4	CU	included in ITEM#5 Cable Ass'y included in ITEM#7 Cable Ass'y
20	009-275-18	Compression type Terminal	6	TGNB-5.5(Insulated)	CU	included in ITEM#5 Cable Ass'y included in ITEM#7 Cable Ass'y
21	140-098-28	Hex.Bolt	4	M12x35	SUS316	
22	142-165-23	Spring Washer	4	M12	SUS316	
23	072-107-30	Eye Bolt	2	M16	SUS316	
24	050-000-06	Motor Bracket	1		SCS14	
25	122-000-11	O-Ring	1	V-225(222.5xd6)	VITON	*
26	142-198-12	Wave Washer	1	6306	SK5	
27	052-109-14	Bearing	1	6306ZZC3		
28	058-000-09	Lead Wire Protection Plate	1	d86xd224x1.6t	SPHC	
29	055-000-17	Rotor	1Set			
30	147-080-15	Impeller Key	1	7x7x18L	SUS316	
31	071-000-39	Collar	1	d225x97.5x1.6t	SECC	
32	053-309-19	Motor Protector	3	9700K-46-215	(H)	
33	056-000-31	Stator 440V-60Hz(USA)	1Set			
34	147-000-04	Key	1	7x2.5x40L	S45C	
35	140-100-24	Hex.Bolt	4	M12x45	SUS316	
36	142-165-23	Spring Washer	4	M12	SUS316	
37	064-000-06	Motor Frame	1		SCS14	
38	122-000-11	O-Ring	1	V-225(222.5xd6)	VITON	*

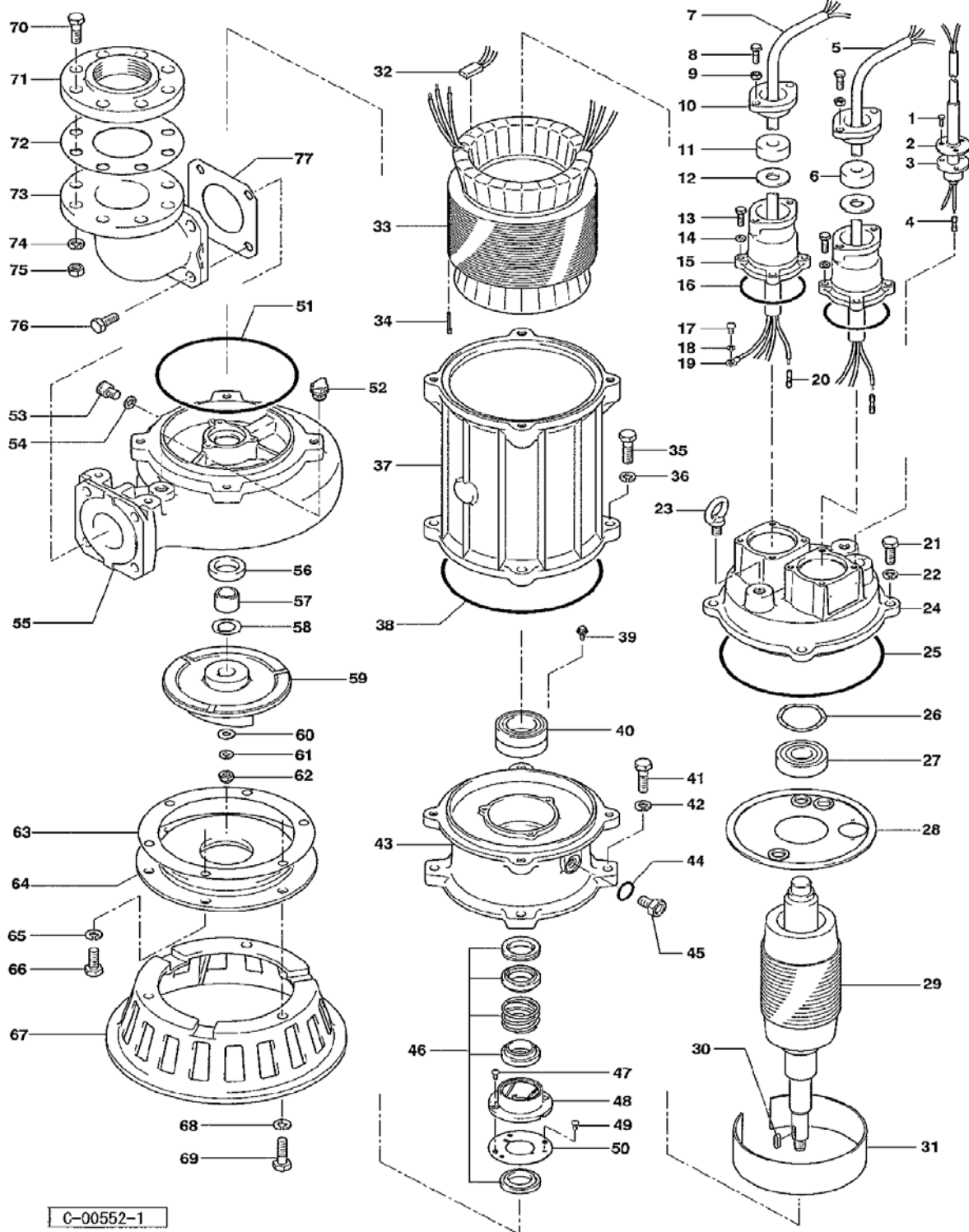
PARTS LIST		CORROSION RESISTANT PUMP				1/26/2017
ITEM	PART No.	DESCRIPTION	QTY	SIZE	MATERIAL	NOTES
39	140-000-06	Hex.Bolt (w/Spring Washer/Plain Washer)	3	M6x12	SWCH	
40	052-140-17	Bearing	1Set	6309ZZD2C3		
41	140-100-24	Hex.Bolt	4	M12x45	SUS316	
42	142-165-23	Spring Washer	4	M12	SUS316	
43	060-000-09	Bearing Housing	1		SCS14	
44	122-259-23	O-Ring	1	12xd3	VITON	*
45	035-102-14	Oil Plug	1	M12x16(B=21)	SUS316	
46	025-191-19	Mechanical Seal	1	X-30W	SIC	
47	143-070-23	Pan Screw	2	M5x6	SWRM	
48	030-142-11	Oil Lifter	1	H-30(A)(T)	Resin	
49	143-070-10	Pan Screw	3	M5x6	SWRM	
50	030-151-13	Seal Stopper	1	H-30(A)(T)	SPCC	
51	122-406-14	O-Ring	1	195xd3.1	VITON	*
52	046-000-04	Air Release Valve	1	PT-1/2	SUS316	
53	035-109-11	Oil Plug	1	M8x12	SUS316	
54	121-248-13	Packing	1	d8.2xd13.5x2t	PE	*
55	020-000-96	Pump Casing	1	80SFQ25.5/27.5/211	SCS14	
56	026-000-26	Oil Seal	1	TC-35508	VITON	
57	071-344-12	Shaft Sleeve	1	80SFQ25.5/7.5/11	SUS316	
58	040-117-18	Impeller Shim		d25.2xd38x0.3t	SUS316	
59	021-379-11	Impeller (60Hz)	1	100SFQ211-62	SCS14	
60	142-130-32	Plain Washer	1	M16	SUS316	
61	142-166-24	Spring Washer	1	M16	SUS316	
62	141-033-28	Hex.Cap Nut	1	M16	SUS316	
63	120-121-16	Packing		d204xd264x0.3t	PE	
64	022-333-16	Suction Cover	1	75/110-CL	SCS14	
65	142-165-23	Spring Washer	3	M12	SUS316	
66	140-096-26	Hex.Bolt	3	M12x25	SUS316	
67	023-123-27	Pump Stand	1	55/110-CL	SCS14	
68	142-165-23	Spring Washer	3	M12	SUS316	
69	140-099-29	Hex.Bolt	3	M12x40	SUS316	
70	140-130-23	Hex.Bolt	8	M16x70	SUS316	
71	048-194-13	Screwed Flange	1	NPT-4(55-CL2)	SCS14	
72	121-148-12	Packing	1	JIS10Kx100mm	Cork	
73	037-114-28	Discharge Bend	1	80x100mm	SCS14	
74	142-166-24	Spring Washer	8	M16	SUS316	
75	141-008-24	Hex.Nut	8	M16	SUS316	
76	140-124-24	Hex.Bolt	4	M16x40	SUS316	

PARTS LIST		CORROSION RESISTANT PUMP				1/26/2017
ITEM	PART No.	DESCRIPTION	QTY	SIZE	MATERIAL	NOTES
77	121-154-11	Packing	1	145mm2(P.C.145)	Cork	*
	173-000-52	Packing O-Ring Set	1Set	(Marked by *)		
16	122-126-20	O-Ring (S.Box)	2	G-75(74.4xd3.1)	VITON	*
25	122-000-11	O-Ring (M.Bracket/M.Frame)	1	V-225(222.5xd6)	VITON	*
38	122-000-11	O-Ring (M.Frame/Brg.Housing)	1	V-225(222.5xd6)	VITON	*
44	122-259-23	O-Ring (Oil Plug)	1	12xd3	VITON	*
51	122-406-14	O-Ring (Brg.Housing/O.Casing)	1	195xd3.1	VITON	*
54	121-248-13	Packing (Oil Plug)	1	d8.2xd13.5x2t	PE	*
77	121-154-11	Packing (Discharge Bend)	1	145mm2(P.C.145)	Cork	*
		Lubricant		Turbine Oil VG32 2,250ml		

PARTS LIST		CORROSION RESISTANT PUMP			1/26/2017	
ITEM	PART No.	DESCRIPTION	QTY	SIZE	MATERIAL	NOTES

EXPLODED VIEW

100SFQ211-62



C-00552-1