

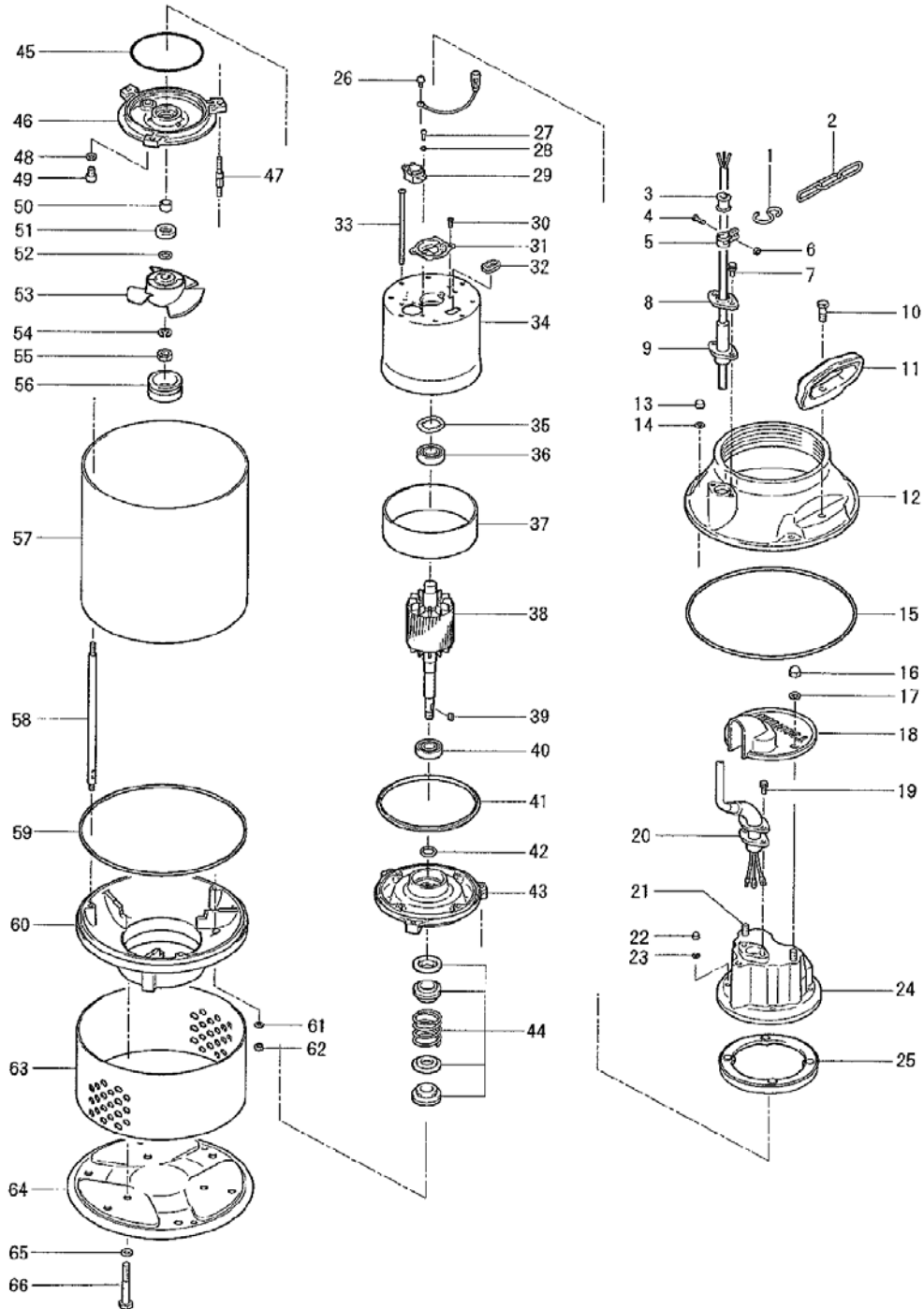
PARTS LIST		AXIAL FLOW DEWATERING PUMP			8/4/2017	
ITEM	PART No.	DESCRIPTION	QTY	SIZE	MATERIAL	NOTES
1	011-100-18	Shackle	1	S-8	SS	
2	095-133-10	Chain	1	d4(4-Link)	SS	
3	010-126-17	Cable Clip Rubber	1	HS2	NBR	
4	140-018-37	Hex.Bolt	1	M5x15	SWRM	
5	010-105-10	Cable Clip	1	SB	SPC	
6	141-026-15	Square Nut	1	M5	S20C	
7	140-427-17	Hex.Bolt (w/Plain Washer)	2	M5x15	SUS304	
8	003-190-10	Gland	1		SUS316	
9	002-002-11	Cable Protection Tube	1	d12.4	NR	
10	140-055-10	Hex.Bolt	2	M8x25	SUS304	
11	068-177-12	Handle	2	AB-4(SUS)	FC	
12	051-169-19	Pump Head Cover	1		FC	100AB2.75 (8HF)
12	051-172-15	Pump Head Cover	1		FC	125AB2.75
13	141-029-18	Hex.Cap Nut	3	M6	SUS304	
14	142-225-19	Seal Washer	3	W-6	SPC+NBR	*
15	121-194-13	Packing	1	d220x3t	NBR	*
16	141-030-12	Hex.Cap Nut	2	M8	SUS304	
17	142-163-18	Spring Washer	2	M8	SUS304	
18	065-162-15	Motor Head Protect. Cover	1	AB-4	FC	
19	140-427-17	Hex.Bolt (w/Plain Washer)	2	M5x15	SUS304	
20	001-004-15	Cable Set (32') 60Hz(USA)	1	VCT4Cx1.25mm2	ABT	
21	144-308-26	Stud Bolt	2	M8x25	SUS304	
22	141-028-17	Hex.Cap Nut	4	M5	SUS304	
23	142-125-18	Plain Washer	4	M5	SUS304	
24	051-133-14	Motor Head Cover	1		ADC	
25	121-249-14	Packing	1	LB-400(E)	NBR	*
26	143-085-34	Pan Screw (w/Spring Washer)	1	M4x6	C3604	
27	143-114-17	Truss Screw	2	M4x16	SWRM	
28	071-174-19	Spacer	2	d6x6lx0.5t	SPC	
30	053-272-12	Motor Protector 220V-60Hz(USA)	1	KA311-DAXL78	(T)	
30	143-124-10	Pan Screw (w/Spring Washer/Plain Washer)	2	M4x6	SWRM	
31	062-185-15	Bearing Fixing Plate	1	LB	SECC	
32	016-110-16	Lead Wire Protection Bush	1	LB-400(E)	NBR	
33	143-119-12	Pan Screw	4	M5x127	SWRM	
34		Stator	1Set			
35	142-192-16	Wave Washer	1	6201(D=32,t=0.4)	SK5	
36	052-100-15	Bearing	1	6201ZZC3		
37	071-173-18	Collar	1	32I	SECC	
38	055-674-14	Rotor	1Set	w/Bearing		

PARTS LIST		AXIAL FLOW DEWATERING PUMP			8/4/2017	
ITEM	PART No.	DESCRIPTION	QTY	SIZE	MATERIAL	NOTES
39	147-016-10	Impeller Key	1	4x4x10l	SUS403	
40	052-152-12	Bearing	1	6302ZZC3		
41	121-244-19	Packing	1	LB-400(E)	NBR	*
42	061-157-15	Bearing Collar	1	d15.1xd21x1.6t	SPCC	
43	060-372-15	Bearing Housing	1		FC	
44	025-290-19	Mechanical Seal	1	W-14HL	SIC+CCBN	
45	122-131-15	O-Ring	1	G-100(99.4xd3.1)	NBR	*
46	029-201-15	Oil Casing	1	AB-4/8	FC	
47	144-179-13	Stud Bolt	3	M6x66(17/18)	SUS304	
48	121-248-13	Packing	1	d8.2xd13.5x2t	PE	*
49	035-112-17	Oil Plug	1	M8x12	SUS304	
50	071-112-19	Shaft Sleeve	1	d11xd14.8x11l	SUS430	
51	026-100-14	Oil Seal	1	SC-15287	NBR	
52	040-100-18	Impeller Shim		d11.2xd17x0.3t	SUS304	
53	021-000-14	Impeller (60Hz)	1	125AB2.75-61	FC	
54	142-164-19	Spring Washer	1	M10	SUS304	
55	141-006-77	Hex.Nut	1	M10	S45C	
56	047-109-21	Impeller Thread Protection Cap	1	No.11	NBR	replaces OLD part# 047-109-18
57	065-164-17	Outer Cover	1	AB-4/8	SUS304	
58	144-158-16	Stud Bolt	3	M6x261(13/20)	SUS403	
59	121-194-13	Packing	1	d220x3t	NBR	*
60	020-575-16	Pump Casing	1	AB-4/8(SUS)	FC	
61	142-126-19	Plain Washer	3	M6	SUS304	
62	141-004-17	Hex.Nut	3	M6	SUS304	
63	023-294-17	Strainer	1	AB-4	SPC	
64	049-150-10	Bottom Plate	1	AB-4	SPC	
65	142-127-10	Plain Washer	3	M8	SUS304	
66	140-062-10	Hex.Bolt	3	M8x60	SUS304	
	032-000-50	Hose Coupling	1	NPT-5(AB2.75)	FC	
	173-128-17	Packing O-Ring Set	1Set	(Marked by *)		
14	142-225-19	Seal Washer (Pump Head Cover Bolt)	3	W-6	SPC+NBR	*
15	121-194-13	Packing (Pump Head Cover/Out.Cover)	1	d220x3t	NBR	*
25	121-249-14	Packing (Motor Head Cover/M.Frame)	1	LB-400(E)	NBR	*
41	121-244-19	Packing (M.Frame/Brg.Housing)	1	LB-400(E)	NBR	*
45	122-131-15	O-Ring (Brg.Housing/O.Casing)	1	G-100(99.4xd3.1)	NBR	*
48	121-248-13	Packing (Oil Plug)	1	d8.2xd13.5x2t	PE	*
59	121-194-13	Packing (Out.Cover/P.Casing)	1	d220x3t	NBR	*
		Lubricant		Turbine Oil VG32 160ml		
	183-006-19	Impeller Puller		A No.1 1/2"	FC	

PARTS LIST		AXIAL FLOW DEWATERING PUMP				8/4/2017
ITEM	PART No.	DESCRIPTION	QTY	SIZE	MATERIAL	NOTES

EXPLODED VIEW

125AB2.75-51/61 (125AB2.75-50/60)



C-00220-2