

PARTS LIST		SEWAGE & WASTEWATER PUMP			9/30/2016	
ITEM	PART No.	DESCRIPTION	QTY	SIZE	MATERIAL	NOTES
1	009-127-14	Terminal	4	R-1.25-4	CU	
2	140-427-17	Hex.Bolt (w/Plain Washer)	2	M5x15	SUS304	
3	003-190-10	Gland	1		SUS316	
4	001-006-56	Cabtyre Cable Set (10m)460V-60Hz(USA)	1	VCT4Cx1.25mm2	LBT	
5	009-104-15	Solderless Terminal	4	TMVB-1.25	CU	
6	009-107-18	Terminal	7	R-14-6	CU	
7	140-035-14	Hex.Bolt	4	M6x20	SUS304	
8	070-107-18	Cable Clamp	2		FC	
9	140-488-16	Hex.Bolt (w/Spring Washer)	8	M8x30	SUS304	
10	006-127-15	Stuffing Box	2	No.3	FC	
11	001-234-11	Cabtyre Cable (Sold per meter)460V-60Hz(USA)	10	2PNCT4Cx14mm2	(Vm)	
12	008-147-17	Mould Cover	1	KR3-9	CR	
13	001-529-16	Cabtyre Cable (Sold per meter)460V-60Hz(USA)	10	2PNCT3Cx14mm2	(Vm)	
14	008-150-13	Mould Cover	1	KR3-12	CR	
15	140-029-28	Hex.Bolt	7	M6x10	SWRM	
16	009-107-18	Terminal	7	R-14-6	CU	
17	009-106-17	Terminal	6	R-8-6	CU	
18	141-004-59	Hex.Nut	7	M6	SWRM	
19	200-000-23	Electrical tape(30M)	1	540S(0.18T-30Wx30M)		
19A	002-000-18	Heat Shrink Tube (Sold per meter)	m	W3F2(3/4IN)	(Vm)	
20	046-000-03	Air Release Valve	1	PT-1/2	SUS304	
21	217-000-17	Fixing Plate	1	BG-6P*22KW/4P*30KW	FC	
22	122-359-11	O-Ring	1	445xd5.7	NBR	*
23	140-102-13	Hex.Bolt	6	M12x55	SUS304	
24	142-165-10	Spring Washer	6	M12	SUS304	
25	142-000-47	Washer	6	M12(d12.5xd25.5x5t)	SUS304	
26	121-513-12	Seal Packing	6	d11.5xd21x4t	CR	
27	122-158-18	O-Ring	1	G-270(269.3xd5.7)	NBR	*
28	143-000-58	Pan Screw (w/Spring Washer/Plain Washer)	1	M6x12	SWRM	
29	009-106-17	Terminal	2	R-8-6	CU	
30	072-103-23	Eye Bolt	2	M24	SUS304	
31	035-113-18	Oil Plug	1	M12x14	SUS304	
32	121-247-12	Packing	1	d12.3xd18x2t	PE	*
33	140-100-11	Hex.Bolt	6	M12x45	SUS304	
34	142-165-10	Spring Washer	6	M12	SUS304	
35	050-000-74	Motor Bracket	1		FC	
36	122-160-13	O-Ring	1	G-290(289.3xd5.7)	NBR	*
37	142-000-70	Wave Washer	1	d83xd99x0.9t	SK5	

PARTS LIST		SEWAGE & WASTEWATER PUMP			9/30/2016	
ITEM	PART No.	DESCRIPTION	QTY	SIZE	MATERIAL	NOTES
38	052-000-27	Bearing (w/O-ring)	1	AC-6309ZZC3		
39	016-000-04	Lead Wire Protection Bush	2	d21xd52x11t	SBR	
40	058-000-21	Lead Wire Protection Plate	1	d114xd290x3t	SPCC	
41	055-001-92	Rotor	1Set			
42	147-000-38	Impeller Key	1	16x10x65L	SUS420	
43	053-001-67	Motor Protector	3	YS11A135A-D20	(H)	
44	056-005-51	Stator 460V-60Hz(USA)	1Set			
45	140-128-15	Hex.Bolt	6	M16x60	SUS304	
46	142-166-11	Spring Washer	6	M16	SUS304	
47	064-001-08	Motor Frame	1		FC	
48	142-427-13	Seal Washer	2	WD-12	SPC+NBR	
49	140-000-77	Hex.Bolt	2	M12x20	SS	
50	122-308-15	O-Ring	1	320xd5.7	NBR	*
51	140-000-68	Hex.Bolt	4	M8x20	SS	
52	062-000-14	Bearing Fixing Plate	1	6314(d130xd190x4.5t)	SS	
53	052-145-12	Bearing	1Set	6314ZZD2C3		
54	146-039-16	Retaining Ring	1	C70	SK5	
55	060-494-14	Bearing Housing	1		FC	
56	122-265-19	O-Ring	1	335xd5.7	NBR	*
57	090-112-18	Leakage Sensor(Float)	1	OLV-5-2(B)		
58	142-293-18	Seal Washer	1	W-10	SUS304	
59	026-269-12	Oil Seal	1	TC-60789	NBR	
60	065-000-45	Outer Cover	1		SGPSS	
61	144-528-11	U-bolt	1	C-#20-M10	SUS304	
62	141-006-19	Hex.Nut	4	M10	SUS304	
63	122-359-11	O-Ring	1	445xd5.7	NBR	*
64	122-259-10	O-Ring	1	12xd3	NBR	*
65	035-102-30	Oil Plug	1	M12x16(B=21)	SUS304	
66	026-269-12	Oil Seal	1	TC-60789	NBR	
67	029-321-12	Casing Cover	1	200/250/300-22-6BG3	FC	
68	140-135-15	Hex.Bolt	4	M16x100	SUS304	
69	142-166-11	Spring Washer	4	M16	SUS304	
70	140-129-16	Hex.Bolt	4	M16x65	SUS304	
71	142-166-11	Spring Washer	4	M16	SUS304	
72	121-514-13	Seal Packing	6	d15.5xd27x4t	CR	*
73	142-000-48	Washer	6	M16(d16.5xd31.5x5t)	SUS304	
74	142-166-11	Spring Washer	6	M16	SUS304	
75	140-129-16	Hex.Bolt	6	M16x65	SUS304	

PARTS LIST		SEWAGE & WASTEWATER PUMP			9/30/2016	
ITEM	PART No.	DESCRIPTION	QTY	SIZE	MATERIAL	NOTES
76	122-259-10	O-Ring	2	12xd3	NBR	*
77	035-102-30	Oil Plug	2	M12x16(B=21)	SUS304	
78	025-000-51	Mechanical Seal	1	H-60	SiC	
79	143-028-13	Pan Screw	3	M5x10	SWRM	
80	030-134-10	Oil Lifter	1	H-60	SPCC	
81	122-266-10	O-Ring	1	460xd6	NBR	*
82	122-265-19	O-Ring	1	335xd5.7	NBR	*
83	122-259-10	O-Ring	1	12xd3	NBR	*
84	035-102-30	Oil Plug	1	M12x16(B=21)	SUS304	
85	029-317-15	Oil Casing	1	400-22-8BG3	FC	
86	122-267-11	O-Ring	1	495xd5	NBR	*
87	029-326-17	Casing Plate	1	200/250/300-22-6BG3	FC	
88	140-318-14	Hex.Socket Cap Bolt	3	M16x45	SUS304	
89	140-290-19	Hex.Socket Cap Bolt	3	M10x45	SUS304	
90	026-118-15	Oil Seal	1	TC-709513	NBR	
91	071-000-05	Shaft Sleeve	1	BK/BG(22-45KW)	SUS304	
92	034-426-14	Mouth Ring(Wear Ring)	1	d230xd282x25L(P.C.261)	FC	
93	140-233-14	Hex.Socket Cap Bolt	4	M5x12	SUS304	
94	122-137-11	O-Ring	1	G-130(129.4xd3.1)	NBR	*
95	026-267-10	Labyrinth Ring	1	d110xd140x13L	SUS304	
96	026-268-11	Oil Seal	1	TC-11014014	NBR	
97	021-000-84	Impeller (60Hz)	1	300BK622-63	FC	
98	145-035-19	Taper Pin	1	5x10	SUS304	
99	142-000-18	Impeller Fixing Washer	1	M20,d55	SUS304	
100	217-022-19	Fixing Plate	1	d75x3t M20(B=30)	SUS304	
101	140-232-13	Hex.Socket Cap Bolt	2	M5x10	SUS304	
102	140-148-11	Hex.Bolt	1	M20x50	SUS304	
103	020-948-14	Pump Casing	1	300B637-52/62	FC	
104	122-267-11	O-Ring	1	495xd5	NBR	*
105	140-233-14	Hex.Socket Cap Bolt	4	M5x12	SUS304	
106	034-430-11	Mouth Ring	1	d340xd383x35L(P.C.370)	FC	
107	022-714-15	Suction Cover	1	300-22-6BG3	FC	
108	142-165-10	Spring Washer	8	M12	SUS304	
109	140-098-15	Hex.Bolt	8	M12x35	SUS304	
110	142-131-17	Plain Washer	4	M20	SUS304	
111	142-168-13	Spring Washer	4	M20	SUS304	
112	140-150-16	Hex.Bolt	4	M20x60	SUS304	
113	023-000-14	Strainer Stand	1	BK(PC620)	FCD	

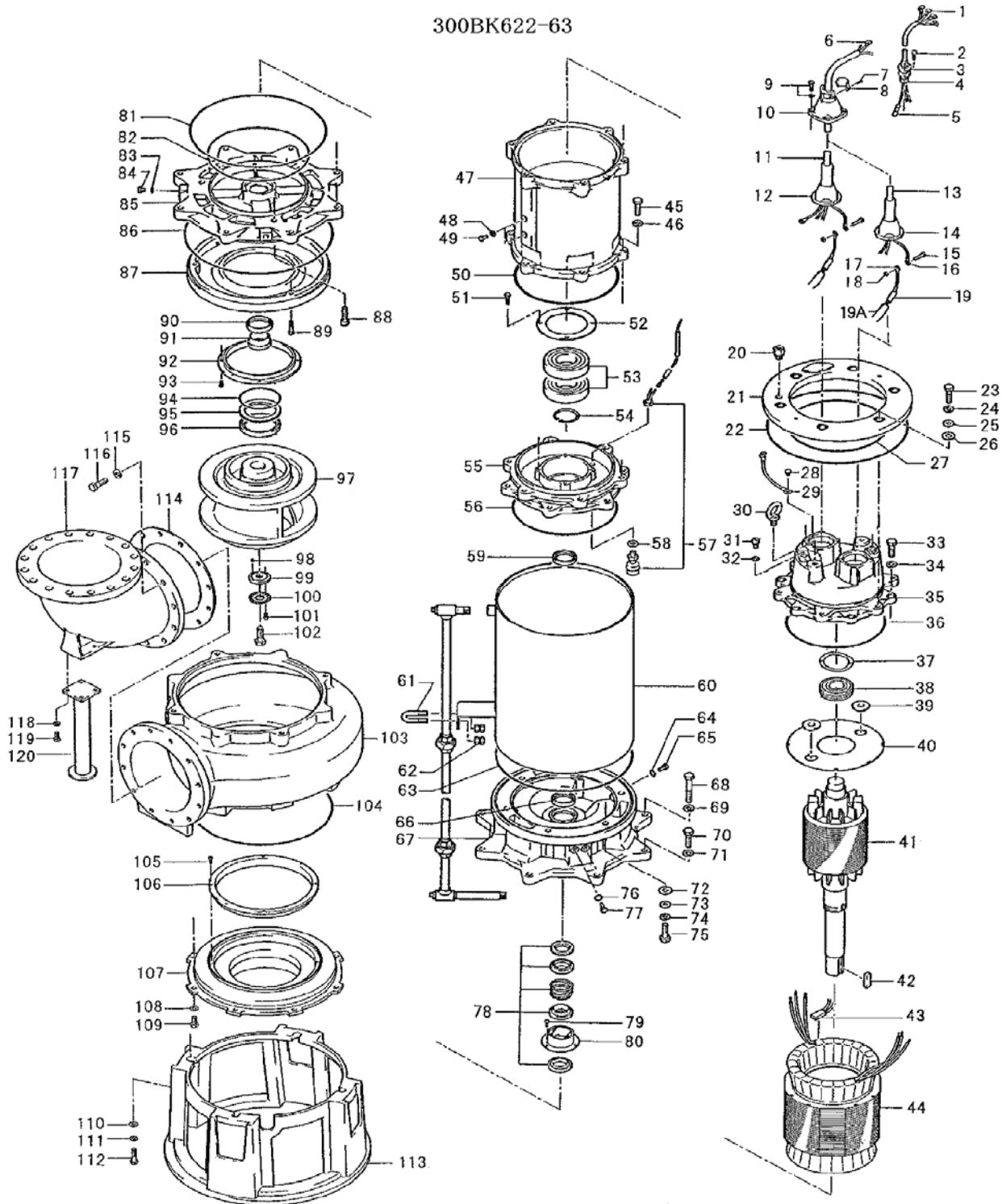
PARTS LIST		SEWAGE & WASTEWATER PUMP			9/30/2016	
ITEM	PART No.	DESCRIPTION	QTY	SIZE	MATERIAL	NOTES
114	037-122-16	Discharge Bend	1	300x300mm	FC	
115	121-168-21	Packing	1	JIS5Kx300mm	NR	
116	142-166-11	Spring Washer	12	M16	SUS304	
117	140-128-15	Hex.Bolt	12	M16x60	SUS304	
118	142-165-10	Spring Washer	4	M12	SUS304	
119	140-096-13	Hex.Bolt	4	M12x25	SUS304	
120	044-000-07	Bend Stand	1	P.C.100x392H	SGPSS	
		<Guide rail rail fittings>				
	099-104-14	Fitting Flange	1	TO-300	FC	
	121-168-21	Packing	1	JIS5Kx300mm	NR	
	140-318-14	Hex.Socket Cap Bolt	12	M16x45	SUS304	
	093-000-04	Guide Hook	1	TO-300/350	FCD	
	140-154-10	Hex.Bolt	4	M20x80	SUS304	
	142-168-13	Spring Washer	4	M20	SUS304	
	091-110-19	Duck Foot Bend(JIS10K)	1	TO-300	FC	
	094-110-18	Guide Support	1	TO-300/350	SS	
	140-128-15	Hex.Bolt	3	M16x60	SUS304	
	141-008-11	Hex.Nut	3	M16	SUS304	
	142-130-16	Plain Washer	3	M16	SUS304	
	096-113-17	Guide Connector	4	65mm	FC	
	140-099-16	Hex.Bolt	4	M12x40	SUS304	
	142-165-10	Spring Washer	4	M12	SUS304	
		<NPT Flange Version>				
	048-256-14	Welding Flange	1	JIS10Kx300mm	SS	
	121-111-29	Packing	1	JIS10Kx300mm	NR	
	140-176-21	Hex.Bolt	16	M22x90	SWRM	
	141-010-16	Hex.Nut	16	M22	SUS304	
	142-001-01	Spring Washer	16	M22	SWRH	
	173-002-93	<b>Packing O-Ring Set</b>	1Set	(Marked by *)		
22	122-359-11	O-Ring (Fixing Plate/Out.Cover)	1	445xd5.7	NBR	*
26	121-513-12	Seal Packing (Fixing Plate Bolt)	6	d11.5xd21x4t	CR	*
27	122-158-18	O-Ring (Fixing Plate/M.Bracket)	1	G-270(269.3xd5.7)	NBR	*
32	121-247-12	O-Ring (Air Tightness Test Plug)	1	d12.3xd18x2t	PE	*
36	122-160-13	O-Ring (M.Bracket/M.Frame)	1	G-290(289.3xd5.7)	NBR	*
50	122-308-15	O-Ring (M.Frame/Brq.Housing)	1	320xd5.7	NBR	*
56	122-265-19	O-Ring (Brq.Housing/Casing Cover)	1	335xd5.7	NBR	*
63	122-359-11	O-Ring (Outer Cover/Casing Cover)	1	445xd5.7	NBR	*
64	122-259-10	O-Ring (Drain Plug)	1	12xd3	NBR	*

PARTS LIST		SEWAGE & WASTEWATER PUMP				9/30/2016
ITEM	PART No.	DESCRIPTION	QTY	SIZE	MATERIAL	NOTES
72	121-514-13	Seal Packing (Casing Cover Bolt)	6	d15.5xd27x4t	CR	*
76	122-259-10	O-Ring (Oil Plug)	2	12xd3	NBR	*
81	122-266-10	O-Ring (Casing Cover/O.Casing)	1	460xd6	NBR	*
82	122-265-19	O-Ring (Casing Cover/O.Casing)	1	335xd5.7	NBR	*
83	122-259-10	O-Ring (Drain Plug)	1	12xd3	NBR	*
86	122-267-11	O-Ring (O.Casing/P.Casing)	1	495xd5	NBR	*
94	122-137-11	O-Ring (Labyrinth Ring)	1	G-130(129.4xd3.1)	NBR	*
104	122-267-11	O-Ring (Pump Casing/Suction Cover)	1	495xd5	NBR	*
		Lubricant		Turbine Oil VG32 8,000ml		
		<b>&lt;Chain&amp;Shackle&gt;(SS)</b>				
	095-152-15	Chain	1	13mmx5M	SS	
	011-109-17	Shackle	1	19mm	SS	
	095-110-11	Chain	1	13mm(9L)	SS	
	011-109-17	Shackle	2	19mm	SS	
		<b>&lt;Chain&amp;Shackle&gt;(SUS)</b>				
	095-150-13	Chain	1	11mmx5M	SUS304	
	011-137-14	Shackle	1	16mm	SUS304	
	095-108-29	Chain	1	11mm(8L)	SUS304	
	011-137-14	Shackle	2	16mm	SUS304	
		<b>&lt;Cooling Pipe Set&gt;</b>				
	080-000-89	Cooling Pipe Set	1Set		SUS304	
		<b>&lt;Impeller Puller&gt;</b>				
	183-005-18	Impeller Puller	1	B No.5	FCD	

PARTS LIST		SEWAGE & WASTEWATER PUMP				9/30/2016
ITEM	PART No.	DESCRIPTION	QTY	SIZE	MATERIAL	NOTES

## EXPLODED VIEW

300BK622-63



C-01319-1