

| PARTS LIST | | HIGH HEAD DEWATERING PUMP | | | 1/31/2018 | |
|------------|------------|------------------------------------|------|---------------------|-------------|-------|
| ITEM | PART No. | DESCRIPTION | QTY | SIZE | MATERIAL | NOTES |
| 1 | 001-875-36 | Cabtyre Cable Set (50') 60Hz (USA) | 1 | 2PNCTF4Cx5.5mm2 | GHZ | |
| 2 | 010-122-10 | Cable Clip Rubber | 1 | No.2 | NBR | |
| 3 | 010-120-18 | Cable Clip | 1 | No.2-1 | SPC | |
| 4 | 141-004-59 | Hex.Nut | 1 | M6 | SWRM | |
| 5 | 140-032-37 | Hex.Bolt | 1 | M6x15 | SWRM | |
| 6 | 095-131-18 | Chain | 1 | 4mm(3L) | SS | |
| 7 | 011-110-11 | Shackle | 1 | 6mm(M8.SC) | SS | |
| 8 | 140-076-17 | Hex.Bolt | 2 | M10x30 | SUS304 | |
| 9 | 003-183-23 | Gland | 1 | GHZ-311W | FC | |
| 10 | 002-104-14 | Cable Protection Tube | 1 | No.4 | NBR | |
| 11 | 005-122-17 | Bush Washer | 2 | d23xd53.5x3.2t | SPC | |
| 12 | 004-135-10 | Cable Bush | 1 | d21xd54x25l | SBR | |
| 13 | 140-055-10 | Hex.Bolt | 4 | M8x25 | SUS304 | |
| 14 | 006-160-10 | Stuffing Box | 1 | GHZ-311W | FC | |
| 15 | 122-128-19 | O-Ring | 1 | G-85(84.4xd3.1) | NBR | * |
| 16 | 009-129-16 | Terminal | 4 | E (Small) | CU | |
| 17 | 009-101-12 | Terminal(C/W Screw) | 4 | d12x(d6.6xd6.6)x25l | C3604 | |
| 18 | 009-129-16 | Terminal | 4 | E (Small) | CU | |
| 19 | 002-129-15 | Heat Shrink Tube (Sold per meter) | m | EVA(d14x1t) | (Vm) | |
| 20 | 002-132-11 | Heat Shrink Tube (Sold per meter) | m | A4(d17x0.27t) | (Vm) | |
| 21 | 037-427-14 | Center-Flange Discharge Pipe | 1 | LH47.5/411-51/61 | FCD | |
| 22 | 141-007-10 | Hex.Nut | 4 | M12 | SUS304 | |
| 23 | 142-165-10 | Spring Washer | 4 | M12 | SUS304 | |
| 24 | 121-373-18 | Packing | 1 | P.C.133xd100x1t | THREE SHEET | * |
| 25 | 144-000-46 | Stud Bolt | 4 | M12x64(24/27) | SUS304 | |
| 26 | 140-095-12 | Hex.Bolt | 1 | M12x20 | SUS304 | |
| 27 | 142-165-10 | Spring Washer | 1 | M12 | SUS304 | |
| 28 | 070-103-10 | L-Shape Fitting | 1 | KT-55 | SPC | |
| 29 | 140-096-13 | Hex.Bolt | 2 | M12x25 | SUS304 | |
| 30 | 142-165-10 | Spring Washer | 2 | M12 | SUS304 | |
| | 142-129-12 | Plain Washer | 2 | M12 | SUS304 | |
| 31 | 127-281-16 | Stay (Left) | 1 | LH47.5/411-51/61 | SS | |
| 32 | 127-280-15 | Stay (Right) | 1 | LH47.5/411-51/61 | SS | |
| 33 | 140-097-14 | Hex.Bolt | 2 | M12x30 | SUS304 | |
| 34 | 142-165-10 | Spring Washer | 2 | M12 | SUS304 | |
| 35 | 143-086-22 | Pan Screw (w/Spring Washer) | 1 | M4x8 | SWRM | |
| 36 | 009-165-14 | Earth Terminal | 1Set | 5.5mm2x190L | | |
| 37 | 140-112-16 | Hex.Bolt | 4 | M12x110 | SUS304 | |
| 38 | 142-165-10 | Spring Washer | 4 | M12 | SUS304 | |

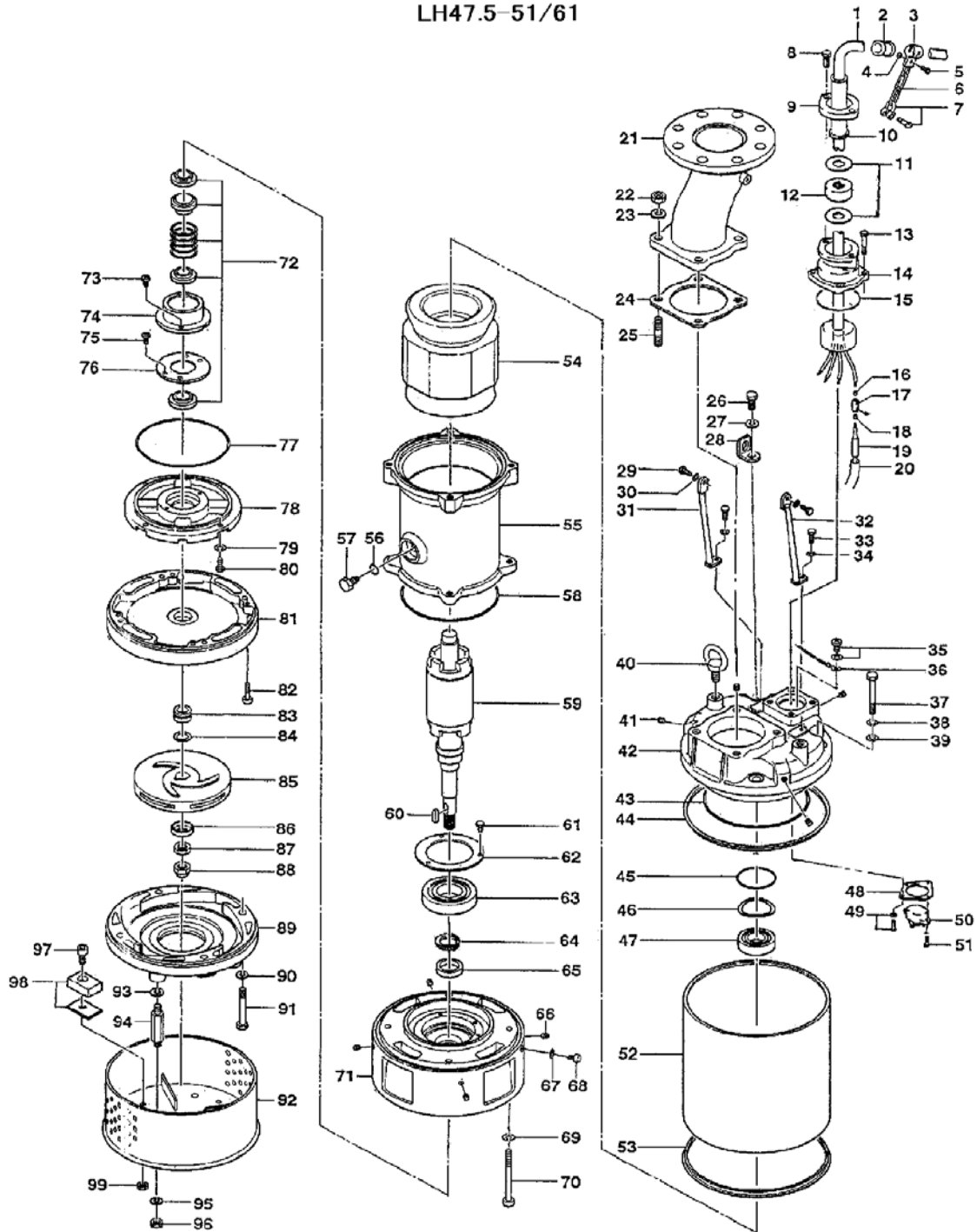
| PARTS LIST | | HIGH HEAD DEWATERING PUMP | | | | | 1/31/2018 |
|------------|------------|--------------------------------|------|-------------------|----------|--|-----------|
| ITEM | PART No. | DESCRIPTION | QTY | SIZE | MATERIAL | | NOTES |
| 39 | 142-298-13 | Seal Washer | 4 | SM-12 | SUS+NBR | | * |
| 40 | 072-107-27 | Eye Bolt | 2 | M16 | SUS304 | | |
| 41 | 144-583-14 | Hex. Socket Cap Screw | 4 | M8x10 | SUS304 | | |
| 42 | 050-493-12 | Motor Bracket | 1 | | FC | | |
| 43 | 122-149-16 | O-Ring | 1 | G-190(189.3xd5.7) | NBR | | * |
| 44 | 121-592-15 | Packing | 1 | LH47.5/411(L) | NBR | | * |
| 45 | 122-245-13 | O-Ring | 1 | 71.4xd3.1 | NBR | | * |
| 46 | 142-198-12 | Wave Washer | 1 | 6306 | SK5 | | |
| 47 | 052-109-14 | Bearing | 1 | 6306ZCC3 | | | |
| 48 | 127-162-10 | Lead Wire Protection Plate | 1 | GHV/GHZ-7.5KW | SS | | |
| 49 | 143-087-23 | Pan Screw (w/Spring Washer) | 2 | M4x10 | SWRM | | |
| 50 | | Motor Protector 220V-60Hz(USA) | 1 | | | | |
| 50 | | Motor Protector 440V-60Hz(USA) | 1 | | | | |
| 51 | 143-016-18 | Pan Screw | 2 | M4x12 | SWRM | | |
| 52 | 065-385-16 | Outer Cover | 1 | | SS | | |
| 53 | 121-592-15 | Packing | 1 | LH47.5/411(L) | NBR | | * |
| 54 | | Stator 220V-60Hz(USA) | 1Set | | | | |
| 54 | | Stator 440V-60Hz(USA) | 1Set | | | | |
| 55 | 064-570-17 | Motor Frame | 1 | | FC | | |
| 56 | 122-259-10 | O-Ring | 1 | 12xd3 | NBR | | * |
| 57 | 144-490-13 | Stator Set Bolt | 1 | M12(B=21) | SUS403 | | |
| 58 | 122-144-11 | O-Ring | 1 | G-165(164.3xd5.7) | NBR | | * |
| 59 | 055-881-16 | Rotor | 1Set | | | | |
| 60 | 147-023-10 | Impeller Key | 1 | 7x7x32l | SUS420 | | |
| 61 | 140-033-25 | Hex.Bolt | 3 | M6x16 | SWRM | | |
| 62 | 062-223-16 | Bearing Fixing Plate | 1 | d92xd130x4.5t | SS | | |
| 63 | 052-112-10 | Bearing | 1 | 6309ZCC3 | | | |
| 64 | 146-027-11 | Retaining Ring | 1 | C45 | SK5 | | |
| 65 | 026-217-15 | Oil Seal | 1 | SC-35508 | NBR | | |
| 66 | 144-583-14 | Hex. Socket Cap Screw | 4 | M8x10 | SUS304 | | |
| 67 | 121-247-12 | Packing | 1 | d12.3xd18x2t | PE | | * |
| 68 | 035-113-18 | Oil Plug | 1 | M12x14 | SUS304 | | |
| 69 | 142-165-10 | Spring Washer | 4 | M12 | SUS304 | | |
| 70 | 140-516-14 | Hex.Socket Cap Bolt | 4 | M12x110 | SUS304 | | |
| 71 | 060-493-13 | Bearing Housing | 1 | | FC | | |
| 72 | 025-246-10 | Mechanical Seal | 1 | H-30T | SiC | | |
| 73 | 143-070-23 | Pan Screw | 2 | M5x6 | SWRM | | |
| 74 | 030-142-11 | Oil Lifter | 1 | H-30(A)(T) | Resin | | |
| 75 | 143-070-10 | Pan Screw | 3 | M5x6 | SWRM | | |

| PARTS LIST | | HIGH HEAD DEWATERING PUMP | | | 1/31/2018 | |
|------------|------------|--------------------------------------|------|--------------------------|-------------|---|
| ITEM | PART No. | DESCRIPTION | QTY | SIZE | MATERIAL | NOTES |
| 76 | 030-151-13 | Seal Stopper | 1 | H-30(A)(T) | SPCC | |
| 77 | 122-333-19 | O-Ring | 1 | 170xd3.1 | NBR | * |
| 78 | 029-397-19 | Oil Casing | 1 | LH47.5/411/615-51/61 | FC | |
| 79 | 142-163-18 | Spring Washer | 4 | M8 | SUS304 | |
| 80 | 140-055-10 | Hex.Bolt | 4 | M8x25 | SUS304 | |
| 81 | 020-000-30 | Upper Pump Casing (w/Labyrinth Ring) | 1 | LH47.5/411-51/61 | FC | |
| 82 | 140-270-13 | Hex.Socket Cap Bolt | 4 | M8x30 | SUS304 | |
| 83 | 040-107-28 | Impeller Shim | | d25.2xd38x0.3t | SUS304 | |
| 84 | 071-000-02 | Shaft Sleeve | 1 | LH47.5/411/615-51/61 | SUS403 | |
| 85 | 021C9714 | Impeller (60Hz) | 1 | LH47.5-61 | HiCrFC | |
| 86 | 047-105-27 | Impeller Thread Protect.Cover | 1 | No.4(22) | SUS304 | |
| 87 | 141-009-38 | Hex.Nut | 1 | M20(H=12) | SUS304 | |
| 88 | 141-034-16 | Hex.Cap Nut | 1 | M20 | SUS304 | |
| 89 | 020-000-31 | Lower Pump Casing (w/Mouth Ring) | 1 | LH47.5/411-51/61 | FC | |
| 90 | 142-165-10 | Spring Washer | 4 | M12 | SUS304 | |
| 91 | 140-109-10 | Hex.Bolt | 4 | M12x90 | SUS304 | |
| 92 | 023-001-28 | Strainer Stand | 1 | LH47.5/411-51/61 | SS | interchangeable with OLD part# 023-543-14 |
| 93 | 142-164-19 | Spring Washer | 4 | M10 | SUS304 | |
| 94 | 144-000-09 | Stud Bolt | 4 | M10x94(20/14) | SUS403 | |
| 95 | 142-164-19 | Spring Washer | 4 | M10 | SUS304 | |
| 96 | 141-006-19 | Hex.Nut | 4 | M10 | SUS304 | |
| 97 | 140-268-18 | Hex.Socket Cap Bolt | 4 | M8x20 | SUS304 | |
| 98 | 043-100-17 | Cathodic Protection Plate | 4 | DW(50x34x20t) | ZNP | |
| 99 | 141-005-18 | Hex.Nut | 4 | M8 | SUS304 | |
| A | 048-139-10 | Screwed Flange | 1 | NPT-4(JIS10K) | FC | |
| | 173-000-19 | Packing O-Ring Set | 1Set | (Marked by *) | | |
| 15 | 122-128-19 | O-Ring | 1 | G-85(84.4xd3.1) | NBR | * |
| 24 | 121-373-18 | Packing | 1 | P.C.133xd100x1t | THREE SHEET | * |
| 39 | 142-298-13 | Seal Washer | 4 | SM-12 | SUS+NBR | * |
| 43 | 122-149-16 | O-Ring | 1 | G-190(189.3xd5.7) | NBR | * |
| 44 | 121-592-15 | Packing | 1 | LH47.5/411(L) | NBR | * |
| 45 | 122-245-13 | O-Ring | 1 | 71.4xd3.1 | NBR | * |
| 53 | 121-592-15 | Packing | 1 | LH47.5/411(L) | NBR | * |
| 56 | 122-259-10 | O-Ring | 1 | 12xd3 | NBR | * |
| 58 | 122-144-11 | O-Ring | 1 | G-165(164.3xd5.7) | NBR | * |
| 67 | 121-247-12 | Packing | 1 | d12.3xd18x2t | PE | * |
| 77 | 122-333-19 | O-Ring | 1 | 170xd3.1 | NBR | * |
| | | Lubricant | | Turbine Oil VG32 2,500ml | | |

| PARTS LIST | | HIGH HEAD DEWATERING PUMP | | | 1/31/2018 | |
|------------|----------|---------------------------|-----|------|-----------|-------|
| ITEM | PART No. | DESCRIPTION | QTY | SIZE | MATERIAL | NOTES |

EXPLODED VIEW

LH47.5-51/61



C-00456-1