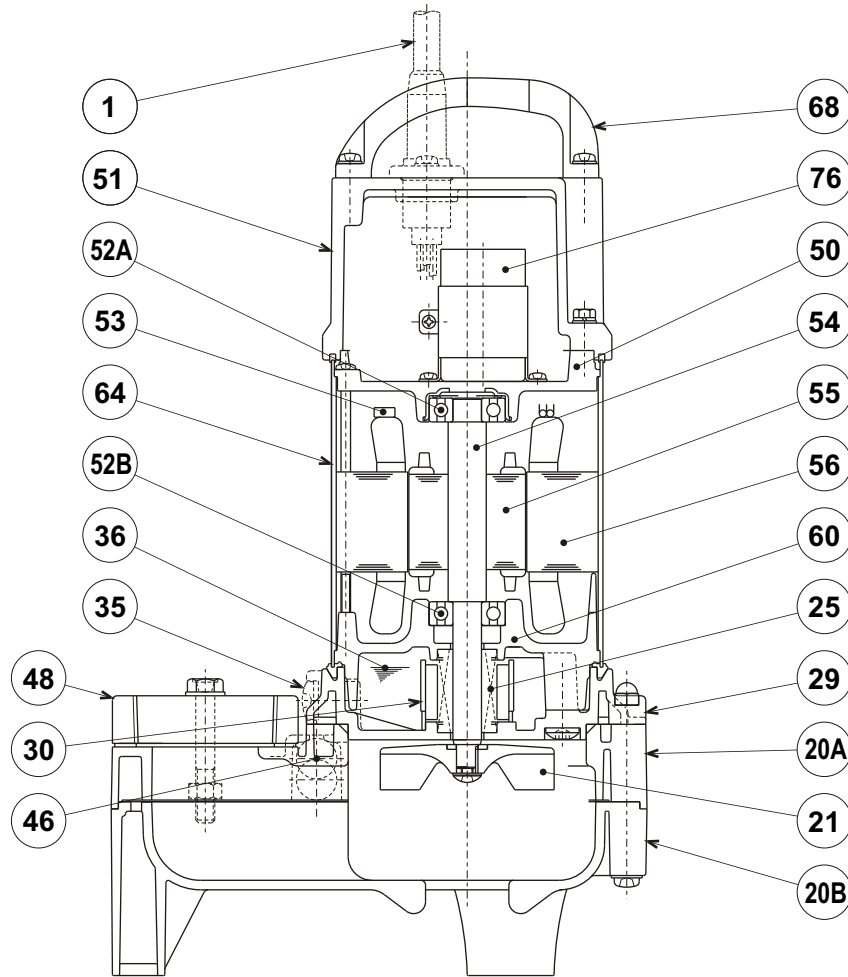




VANCS - SERIES - PU
(FRP) SEMI-VORTEX - WATER FEATURE PUMPS

SECTIONAL VIEW

2PU



PART#	DESCRIPTION	MAIN MATERIAL / NOTE	RELATED ASTM, AISI CODE	RELATED EN CODE	QTY
1	Power Cable	PVC Sheath AWG16/3-32ft			1
20A	Upper Pump Casing	ABS Plastic w/GF10			1
20B	Lower Pump Casing	ABS Plastic			1
21	Impeller	PPO Plastic w/GF30			1
25	Mechanical Seal	Silicon Carbide / D-12RC			1
29	Oil Casing	PPS Plastic w/GF40			1
30	Oil Lifter	PBT Plastic w/GF40			1
35	Oil Plug	Stainless Steel	S 30400	1.4301	1
36	Lubricant	White Mineral Oil ISO VG32			
46	Air Valve	Glass Ball			1
48	Companion Flange	PBT Plastic w/GF30 / NPT 2"			1
50	Motor Bracket	Aluminum Alloy Die Casting	B85 383.0	EN 1706 AC-46100	1
51	Motor Head Cover	PPS Plastic w/GF40			1
52A	Upper Bearing	#6201ZZC3			1
52B	Lower Bearing	#6201ZZC3			1
53	Motor Protector				1
54	Shaft	Stainless Steel	S 42000	1.4028	1
55	Rotor				1
56	Stator				1
60	Bearing Housing	Aluminum Alloy Die Casting	B85 383.0	EN 1706 AC-46100	1
64	Motor Housing	Stainless Steel	S 30400	1.4301	1
68	Handle	ABS Plastic			1
76	Capacitor				1