

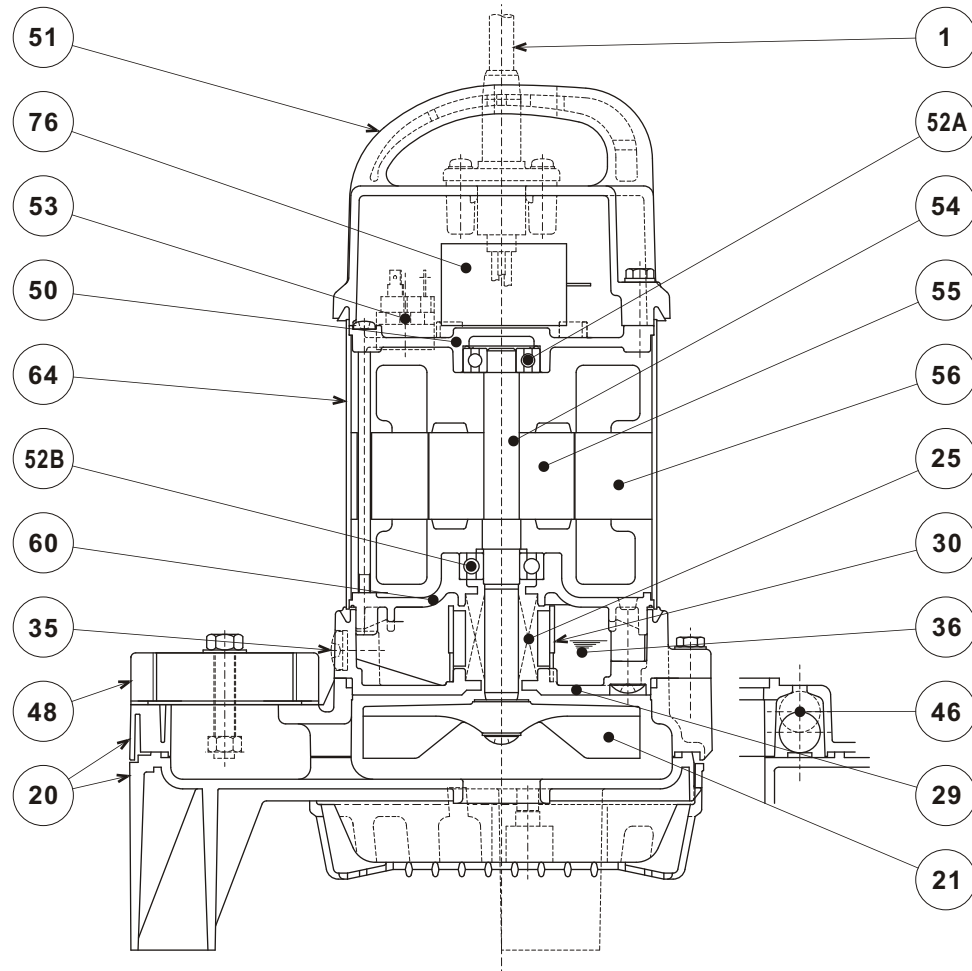


# VANCS - SERIES - PN

(FRP) SEMI-VORTEX - WATER FEATURE PUMPS

## SECTIONAL VIEW

8PN



| PART# | DESCRIPTION      | MAIN MATERIAL / NOTE                              | RELATED ASTM, AISI CODE | RELATED EN CODE  | QTY |
|-------|------------------|---|-------------------------|------------------|-----|
| 1     | Power Cable      | PVC Sheath AWG14/3-32ft<br>or AWG16/3-32ft (230V) |                         |                  | 1   |
| 20    | Pump Casing      | ABS Plastic w/GF20                                |                         |                  | 1   |
| 21    | Impeller         | PPO Plastic w/GF20                                |                         |                  | 1   |
| 23    | Suction Strainer | ABS Plastic                                       |                         |                  | 1   |
| 25    | Mechanical Seal  | Silicon Carbide / W-14HL                          |                         |                  | 1   |
| 29    | Oil Casing       | PPS Plastic w/GF40                                |                         |                  | 1   |
| 30    | Oil Lifter       | PBT Plastic                                       |                         |                  | 1   |
| 35    | Oil Plug         | Stainless Steel                                   | S 30400                 | 1.4301           | 1   |
| 36    | Lubricant        | White Mineral Oil ISO VG32                        |                         |                  |     |
| 46    | Air Valve        | Glass Ball  |                         |                  | 1   |
| 48    | Companion Flange | PBT Plastic w/GF30 / NPT 2"                       |                         |                  | 1   |
| 50    | Motor Bracket    | Aluminum Alloy Die Casting                        | B85 383.0               | EN 1706 AC-46100 | 1   |
| 51    | Motor Head Cover | PPS Plastic w/GF40                                |                         |                  | 1   |
| 52A   | Upper Bearing    | #6201ZZC3   |                         |                  | 1   |
| 52B   | Lower Bearing    | #6302ZZC3   |                         |                  | 1   |
| 53    | Motor Protector  |   |                         |                  | 1   |
| 54    | Shaft            | Stainless Steel                                   | S 30400                 | 1.4301           | 1   |
| 55    | Rotor            |   |                         |                  | 1   |
| 56    | Stator           |   |                         |                  | 1   |
| 60    | Bearing Housing  | Aluminum Alloy Die Casting                        | B85 383.0               | EN 1706 AC-46100 | 1   |
| 64    | Motor Housing    | Stainless Steel                                   | S 30400                 | 1.4301           | 1   |
| 76    | Capacitor        |   |                         |                  | 1   |