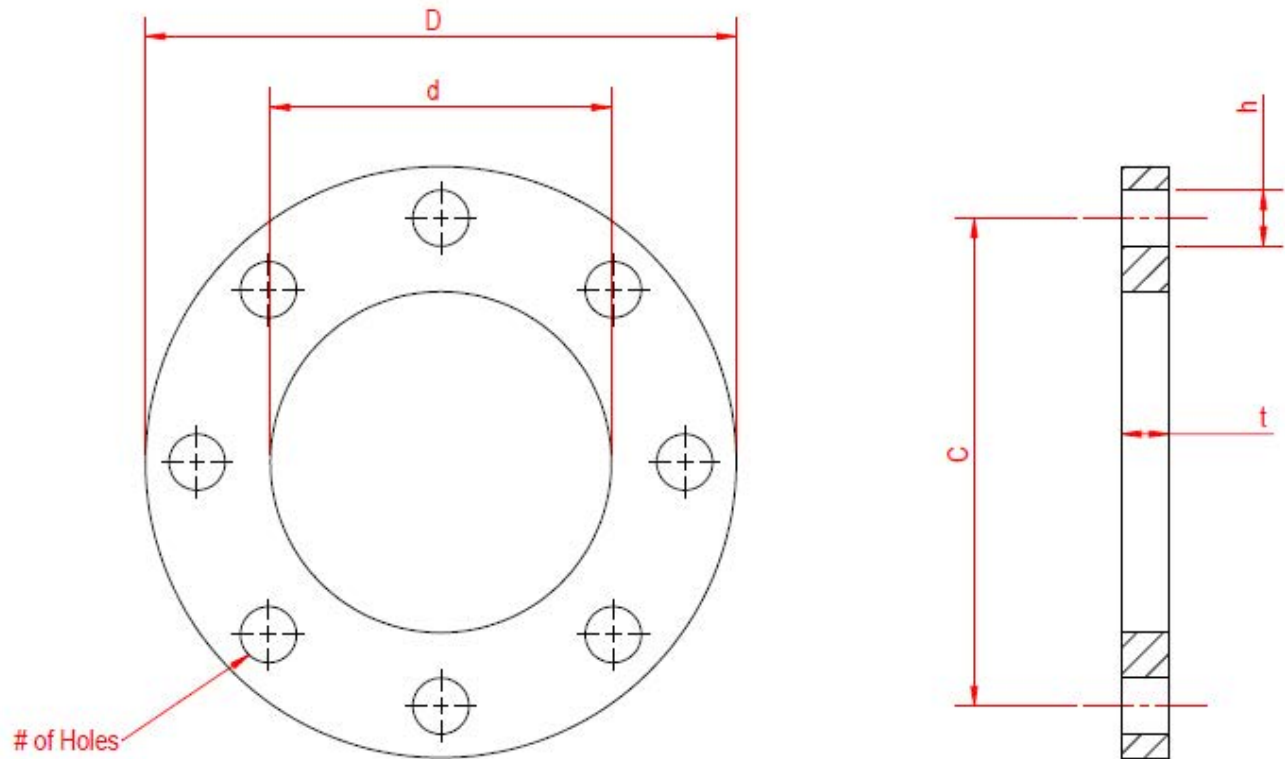


JIS5K TO ANSI 150# FLANGE CONVERSION GUIDE



Nominal Pipe Size (d)	Diameter of Flange (D)	Flange Thickness (t)	# of Bolts	For Bolt Size	Diameter of Bolt Holes (h)	Diameter of Bolt Circle (C)
Low Pressure [ANSI 150# (in), JIS5K (mm)]*						
2in	6	3/4	4	5/8	3/4	4-3/4
50mm	5.12 (130mm)	0.55 (14mm)	4	M12	0.59 (15mm)	4.13 (105mm)
3in	7-1/2	15/16	4	5/8	3/4	4-3/4
80mm	7.09 (180mm)	0.55 (14mm)	4	M12	0.59 (15mm)	5.71 (145mm)
4in	9	15/16	8	5/8	3/4	7-1/2
100mm	7.87 (200mm)	0.63 (16mm)	8	M16	0.75 (19mm)	6.5 (165mm)
6in	11	1	8	3/4	7/8	9-1/2
150mm	10.43 (265mm)	0.71 (18mm)	8	M16	0.75 (19mm)	9.06 (230mm)
8in	13-1/2	1-1/8	8	3/4	7/8	11-3/4
200mm	7.87 (320mm)	0.79 (20mm)	8	M20	0.91 (23mm)	11.02 (280mm)
10in	16	1-3/16	12	7/8	1	14-1/4
250mm	15.16 (385mm)	0.87 (22mm)	12	M20	0.91 (23mm)	13.58 (345mm)
12in	19	1-1/4	12	7/8	1	17
300mm	16.93 (430mm)	0.87 (22mm)	12	M20	0.91 (23mm)	15.35 (390mm)
14in	21	1-3/8	12	1	1-1/8	18-3/4
350mm	18.90 (480mm)	0.94 (24mm)	12	M22	0.98 (25mm)	17.13 (435mm)
16in	23-1/2	1-7/16	16	1	1-1/8	21-1/4
400mm	21.26 (540mm)	0.94 (24mm)	16	M22	0.98 (25mm)	19.49 (495mm)