

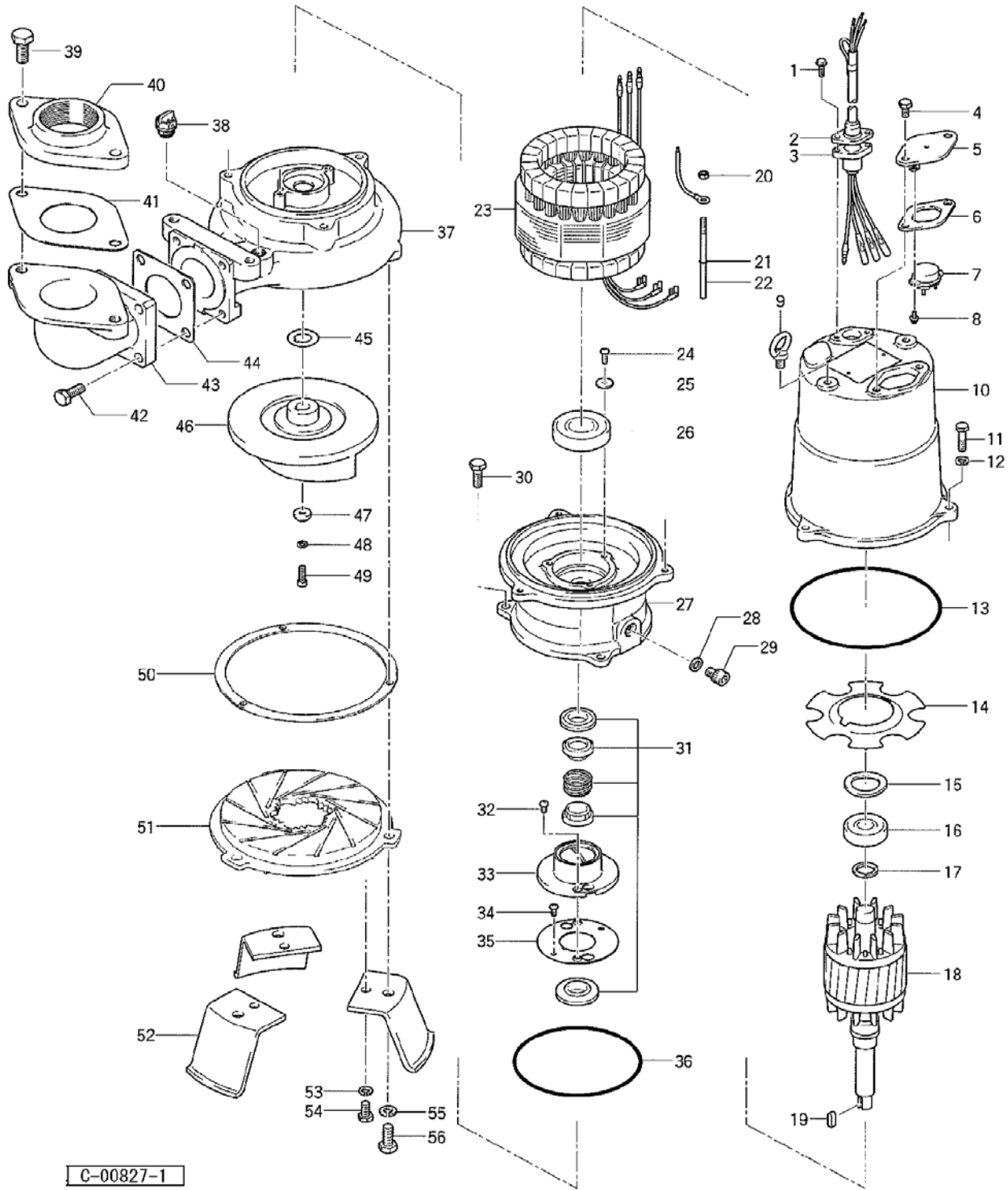
PARTS LIST		SEWAGE & WASTEWATER CUTTER PUMP			8/29/2019	
ITEM	PART No.	DESCRIPTION	QTY	SIZE	MATERIAL	NOTES
1	140-427-17	Hex.Bolt (w/Plain Washer)	2	M5x15	SUS304	
2	003-190-10	Gland	1		SUS316	
3	001-803-20	Cabtyre Cable Set (32') 60Hz(USA)	1	VCT4Cx1.25mm2	LBT	
	001-803-33	Cabtyre Cable Set (50') OPTION	1	VCT4Cx1.25mm2	LBT	50' OPTION
4	140-052-17	Hex.Bolt	2	M8x16	SUS304	
16	127-107-17	Protector Fixing Plate	1	22/37-BE2	SUS304	replaces OLD part# 127-195-12
6	121-446-13	Packing	1	22/37-BE2	NBR	*
7	053-001-29	Motor Protector 208/230V-60Hz(USA)	1	KA311-DBXL55	(T.C)	
	053-383-17	Motor Protector 460V-60Hz(USA)	1	KA311-DAXL63	(T.C)	
8	143-014-16	Pan Screw	2	M4x8	SWRM	
9	072-105-25	Eye Bolt	2	M8	SUS304	
10	064-000-73	Motor Frame	1		FC	
11	140-036-15	Hex.Bolt	3	M6x25	SUS304	
12	142-162-17	Spring Washer	3	M6	SUS304	
13	122-285-15	O-Ring	1	155xd3.1	NBR	*
14	058-000-13	Lead Wire Protection Plate	1	d61xd132x2t	Bakelite	
15	142-389-12	Wave Washer	1	6204	SK5	
16	052-187-16	Bearing (w/O-ring)	1	AC-6204ZC3		
17	061-174-18	Slinger	1	d20xd27x2t	SPC	
18	055-001-24	Rotor	1Set			
19	147-000-30	Impeller Key	1	5x5x16L	SUS304	
20	141-003-58	Hex.Nut	1	M5	SWRM	
21	146-000-09	Retaining Ring	1	E4	S60CM	
22	129-000-05	Stopper	1	M5x112(52/20)	SS	
23	056-003-64	Stator 208/230V-60Hz220V-60Hz(USA)	1Set			
	056-003-67	Stator 460V-60Hz(USA)	1Set			
24	143-042-13	Pan Screw	3	M6x10	SWRM	
25	062-196-19	Bearing Fixing Washer	3	d8xd20.5x2.3t	SS	
26	052-108-13	Bearing	1	6305ZC3		
27	060-000-76	Bearing Housing	1		FC	
28	121-246-11	Packing	1	d10.3xd16x2t	PE	*
29	035-124-12	Oil Plug	1	M10x15	SUS304	
30	140-055-10	Hex.Bolt	3	M8x25	SUS304	
31	025-000-91	Mechanical Seal	1	H-20 (RoHS2)	SiC + SiC	replaces OLD item# 025-192-10
32	143-070-23	Pan Screw	2	M5x6	SWRM	
33	030-144-13	Oil Lifter	1	H-20(A)(T)	Resin	
34	143-070-10	Pan Screw	2	M5x6	SWRM	
35	030-153-15	Seal Stopper	1	H-20(A)	SPCC	

PARTS LIST		SEWAGE & WASTEWATER CUTTER PUMP			8/29/2019	
ITEM	PART No.	DESCRIPTION	QTY	SIZE	MATERIAL	NOTES
36	122-138-12	O-Ring	1	G-135(134.4xd3.1)	NBR	*
37	020-997-18	Pump Casing	1	50B4.75-52/62	FC	
38	046-107-13	Air Release Valve	1	PT-1/2	Nylon	
39	140-099-16	Hex.Bolt	2	M12x40	SUS304	
40	048-136-17	Screwed Flange	1	NPT-2(P.C.140)	FC	
41	121-137-18	Packing	1	MBT(P.C.140)	NBR	*
42	140-078-19	Hex.Bolt	4	M10x35	SUS304	
43	037-117-18	Discharge Bend	1	50mm(122-16)	FC	
44	121-142-16	Packing	1	90mm2(P.C.98)	NBR	*
45	040-149-19	Impeller Shim		d15.2xd26x0.3t	SUS304	
46	021-007-42	Impeller (60Hz)	1	50C4.75-CR-63	HiCrFC	
	021-Q70-13	Impeller (60Hz) **optional**	1	50C4.75-63	FC	lower cost FC option
	021-Q69-19	Impeller (50Hz) **optional**	1	50C4.75-53	FC	50Hz FC option
47	142-105-12	Impeller Fixing Washer	1	d7xd21x9t	SUS304	
48	142-162-17	Spring Washer	1	M6	SUS304	
49	140-250-17	Hex.Socket Cap Bolt	1	M6x16	SUS304	
50	120-171-11	Packing (S.Cover)		d188xd228x0.3t	PE	
51	022-001-65	Suction Cover	1	50C4.75-CR-63	HiCrFC	
52	023-000-60	Pump Stand	3	80B4.4/4.75	SS	
53	142-163-18	Spring Washer	3	M8	SUS304	
54	140-052-17	Hex.Bolt	3	M8x16	SUS304	
55	142-164-19	Spring Washer	3	M10	SUS304	
56	140-075-16	Hex.Bolt	3	M10x25	SUS304	
	173-001-04	<b>Packing O-Ring Set</b>	1Set	(Marked by *)		
6	121-446-13	Packing (Protector Fixing Plate)	1	22/37-BE2	NBR	*
13	122-285-15	O-Ring (M.Frame/Brg.Housing)	1	155xd3.1	NBR	*
28	121-246-11	Packing (Oil Plug)	1	d10.3xd16x2t	PE	*
36	122-138-12	O-Ring (M.Frame/P.Casing)	1	G-135(134.4xd3.1)	NBR	*
41	121-137-18	Packing (Screwed Flange)	1	MBT(P.C.140)	NBR	*
44	121-142-16	Packing (Discharge Bend)	1	90mm2(P.C.98)	NBR	*
		Lubricant		Turbine Oil VG32 620ml		

PARTS LIST		SEWAGE & WASTEWATER CUTTER PUMP			8/29/2019	
ITEM	PART No.	DESCRIPTION	QTY	SIZE	MATERIAL	NOTES

## EXPLODED VIEW

50C4.75-CR-63



C-00827-1