

Parts List	Sewage Pumps	Control No:	Date: 03-18-2005
------------	--------------	-------------	------------------

ITEM	PARTS No.	DESCRIPTION	Q'TY	SIZE	MATERIAL	PRICE (\$)	NOTES
1	106-482-14	Float Set	1set	A02-2 (PUA(T) / Micro Switch)		106.60	NEW (Barrel Shape)
1	106-044-10	Float Set	1set	MAO-2 (PUA(T) / Mercury Switch)		106.60	OLD (Teardrop Shape)
2	143-146-18	Tapping Screw	2	M5x20 (Pan), w/ Washer, Sprit	SUS304	0.50	
3	001-803-20	Power Cable 32'	1	LBT, AWG16/4 x 32'	VCT	96.50	
4	143-146-18	Tapping Screw	2	M5x20 (Pan), w/ Washer, Sprit	SUS304	0.50	
5	003-100-13	Gland	1	LB	SUS304	5.50	c/w Power Cable
6	109-129-19	Float Support Bush	2	d14	Rubber	1.10	
7	143-143-15	Tapping Screw	1	M4x16 (Truss, D=8)	SUS304	0.30	
8	109-131-27	Float Support Pipe	1	d14x250L (3Holes)	PVC	3.60	
9	109-133-16	Holder	1		Resin	10.70	
10	143-143-15	Tapping Screw	1	M4x16 (Truss, D=8)	SUS304	0.30	
11	143-174-15	Tapping Screw	2	M4x14 (Pan), w/ Washer, Sprit	SUS304	0.40	
12	143-198-15	Tapping Screw	2	M6x30 (Pan)	SUS304	3.30	
13	142-126-19	Washer	2	M6	SUS304	0.20	
14	068-278-14	Handle	1	15-PUT	Resin	26.00	
15	051-263-14	Motor Head Cover	1	15-PUA/WT	Resin	227.90	
16	141-029-18	Acorn Nut	4	M6	SUS304	2.10	
17	142-126-19	Washer	4	M6	SUS304	0.20	
18	143-103-13	Tapping Screw	3	M4x10 (Truss)	SWCH	0.70	
19	114-171-12	Relay Unit 200/220V-60HZ	1	MA3K-JA1-A, w/ Transformer		424.80	
19	114-	Relay Unit 400/440V-60HZ	1	MA3K-JA1-C, w/ Transformer		424.80	
19	114-	Relay Unit 575V-60HZ	1			424.80	
20	143-138-17	Tapping Screw	2	M4x12 (Truss)	SWRM	0.40	
21	053-510-15	Motor Protector 200/220V-60HZ	1	KA313-GBVL102 (T)		114.70	
21	053-380-14	Motor Protector 380V-50HZ	1	KA313-GQVL102 (T)		63.60	
21	053-378-19	Motor Protector 400/440V-60HZ	1	KA313-GQVL104 (T)		162.80	
21	053-379-10	Motor Protector 440/460/480V-60HZ	1	KA313-GQVL116 (T)		70.00	
21	053-	Motor Protector 575V-60HZ	1			162.80	
22	121-569-13	Gasket (H.Cover/H.C.Spacer)	1	15-PUT/PNT/PSHT	NBR	21.00	*
23	143-199-16	Pan Screw	4	M6x190	SWRM	18.20	
24	142-113-26	Washer	4	M6 (N, D=11.5)	SPC	0.20	see 142-113-13
25	082-106-14	Head Cover Spacer	1	15-PU(A/W)T	Resin	190.90	
26	121-570-17	Gasket (H.C.Spacer/M.Frame)	1	d152xD161x2.1t	NBR	24.90	*
27	143-085-34	Pan Screw	1	M4x6, w/ S.Washer	BSBM	0.40	see 143-085-21
28	009-187-12	Grounding Wire	1	AWG16 x 150L		3.30	
28	009-190-18	Grounding Wire	1	AWG16 x 150L , G/Y		1.60	
29	050-464-14	Motor Bracket	1	15-PU(A/W)T	ADC	103.90	
30	056-B78-16	Stator 200/220V-60HZ	1	15-PU(A/W)T (200-50, 200/220-60)		1,628.00	c/w Motor Frame
30	056-	Stator 400/440V-60HZ	1	15-PU(A/W)T (380/400/415-50, 400/440-60)		1,628.00	c/w Motor Frame
30	056-	Stator 575V-50HZ	1	15-PU(A/W)T		1,628.00	c/w Motor Frame
31	142-435-14	Wave Washer	1	BBY060311A0	SUP	5.00	
32	052-102-17	Ball Bearing (Upper)	1	6203ZZC3		9.60	
33	055-830-10	Rotor and Shaft	1	15-PU(A/W)T		1,278.70	c/w Ball Bearings
34	061-161-12	Bearing Collar	1	d25.1xD36x1.6t	SPC	2.20	
35	052-108-13	Ball Bearing (Lower)	1	6305ZZC3		18.90	
36	060-462-13	Bearing Housing	1	15-PUT/PNT/PSHT	ADC	233.80	
37	025-252-19	Mechanical Seal	1	H-20A	SiC+CCBN	196.80	see 025-192-10
38	143-070-23	Pan Screw	2	M5x6, w/ Scotch Grip	SWRM	0.20	
39	030-144-13	Oil Lifter	1	H-20(A)(T)	Resin	4.00	
40	143-193-10	Tapping Screw	2	M5x12 (Pan), Sprit	SWRM	0.30	
41	030-153-15	Seal Stoper	1	H-20(A)	SPCC	4.30	
42	121-567-11	Gasket (M.Frame/O.Casing)	1	15-PUT/PNT/PSHT	NBR	9.30	*
43	035-127-15	Oil Plug	1	M10x15 (Binding Screw)	SUS304	3.30	
44	121-246-11	Gasket (Oil Plug)	1	d10.3xD16x2t	PE-sheet	0.80	*
45	029-380-19	Oil Casing	1	15-PUT/PNT/PSHT	Resin	83.20	
46	140-484-12	Bolt	4	M8x45, w/ S.Washer & Washer	SUS304	2.50	
47	143-143-15	Tapping Screw	1	M4x16 (Truss, D=8)	SUS304	0.30	
48	143-194-11	Truss Screw	6	M6x30, w/ PE-Washer	SUS304	0.90	
49	142-428-14	Conical Spring Washer	1	d16.3xD31.5x1.2t	SUS304	2.50	
50	021-P52-18	Impeller (60Hz)	1	15-PUT/PNT-60Hz	Resin	24.40	60Hz
50	021-P51-17	Impeller (50Hz)	1	15-PUT/PNT-50Hz	Resin	24.40	50Hz
51	143-195-12	Truss Screw	1	M8x18, w/ Washer	SUS304	2.70	
52	122-276-13	O-Ring (O.Casing/P.Casing)	1	160xd3.1	NBR	4.90	*
53	140-484-12	Bolt	4	M8x45, w/ S.Washer & Washer	SUS304	2.50	
54	048-268-19NPT	Companion Flange 3" NPT	1	NPT-3" (15-PUT)	PVC	13.80	
54	048-15-PUT-SS	Companion Flange 3" NPT	1	NPT-3" (15-PUT)	SCS	156.80	Option
55	121-568-12	Gasket (Companion Flange)	1	15-PUT/PNT/PSHT	NBR	4.30	
56	020-B16-15	Pump Casing	1	15-PUT	Resin	48.00	
57	141-121-11	Nut	2	M8 (S=12)	SUS304	0.70	
<Gasket O-Ring Set>							
	173-563-18	Gasket O-Ring Set	1set	(*)		65.10	
22	121-569-13	Gasket (H.Cover/H.C.Spacer)	1	15-PUT/PNT/PSHT	NBR	21.00	*

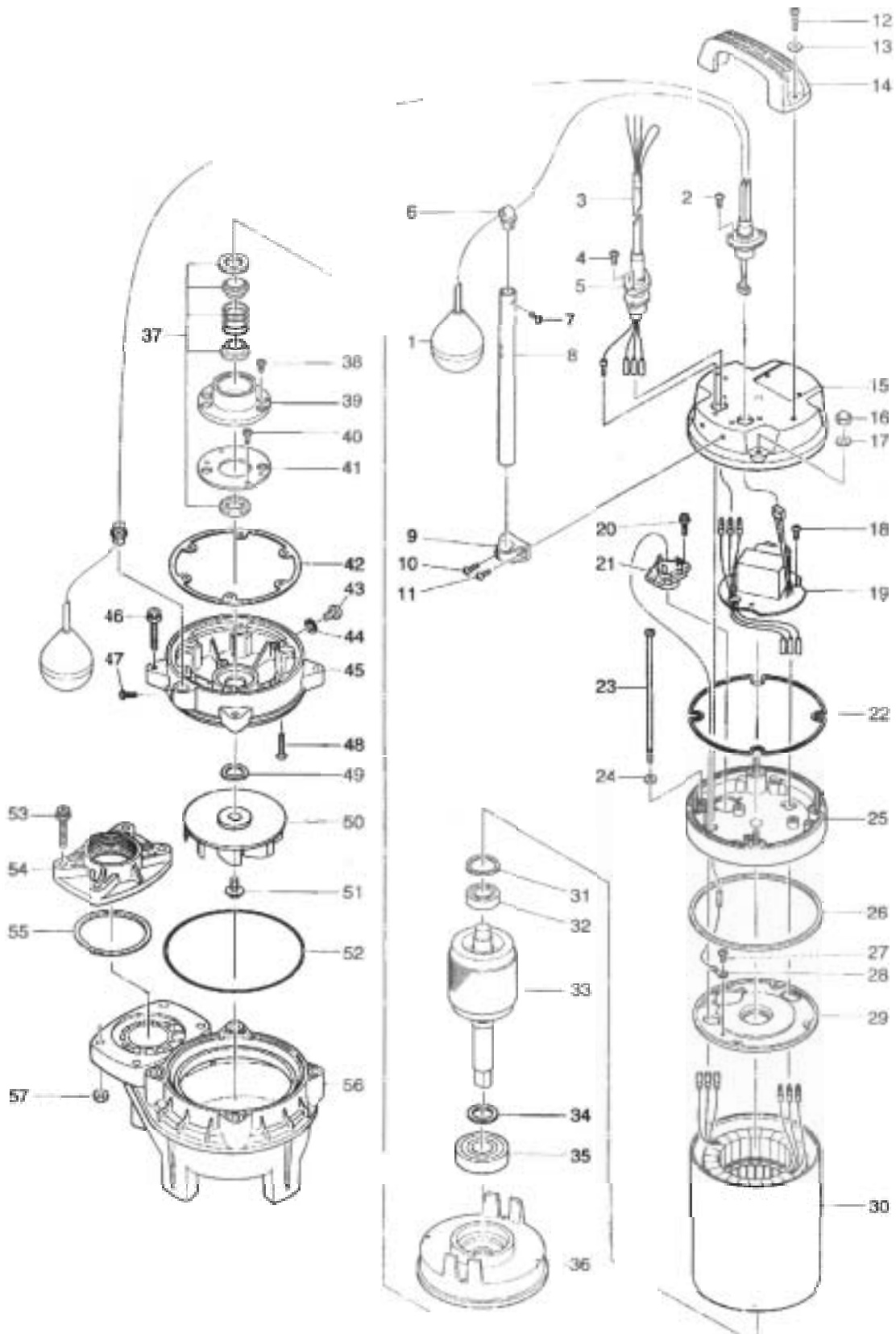
* Indicates items included in set

Parts List

Sewage Pumps

Control No:

Date: 03-18-2005





MODEL 80PUA21.5-61

Parts List		Sewage Pumps		Control No:		Date: 03-18-2005	
ITEM	PARTS No.	DESCRIPTION	Q'TY	SIZE	MATERIAL	PRICE (\$)	NOTES
26	121-570-17	Gasket (H.C.Spacer/M.Frame)	1	d152xD161x2.1t	NBR	24.90	*
42	121-567-11	Gasket (M.Frame/O.Casing)	1	15-PUT/PNT/PSHT	NBR	9.30	*
44	121-246-11	Gasket (Oil Plug)	1	d10.3xD16x2t	PE-sheet	0.80	*
52	122-276-13	O-Ring (O.Casing/P.Casing)	1	160xd3.1	NBR	4.90	*
55	121-568-12	Gasket (Companion Flange)	1	15-PUT/PNT/PSHT	NBR	4.30	*
		Lubricant		Turbine Oil#32 500 mL (16.9 floz)	(SAE 10W-20)		
		Parts for guide rail fittings are shown in the following Control No.					
		TOK-65					
<Option for Longer Cable>							
3	001-803-33	Power Cable 50'	1	LBT, AWG 16/4 x 50'	VCT	134.20	
3	001-803-62	Power Cable 100'	1	LBT, AWG 16/4 x 100'	VCT	272.30	
3	001-803-20-150FT	Power Cable 150'	1	LBT, AWG 16/4 x 150'	VCT	438.10	

* Indicates items included in set

Parts List

Sewage Pumps

Control No:

Date: 03-18-2005

